


APP CRS	Rwy ldg	11089
191°	TDZE	272
	Apt Elev	312

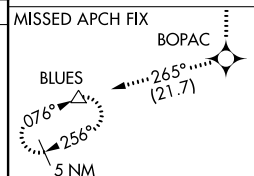
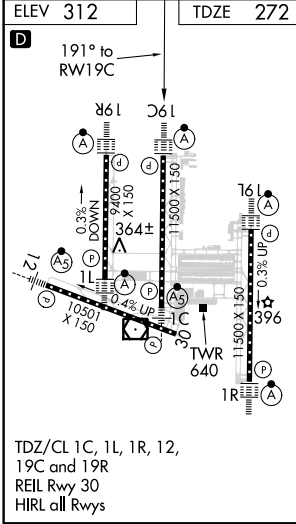
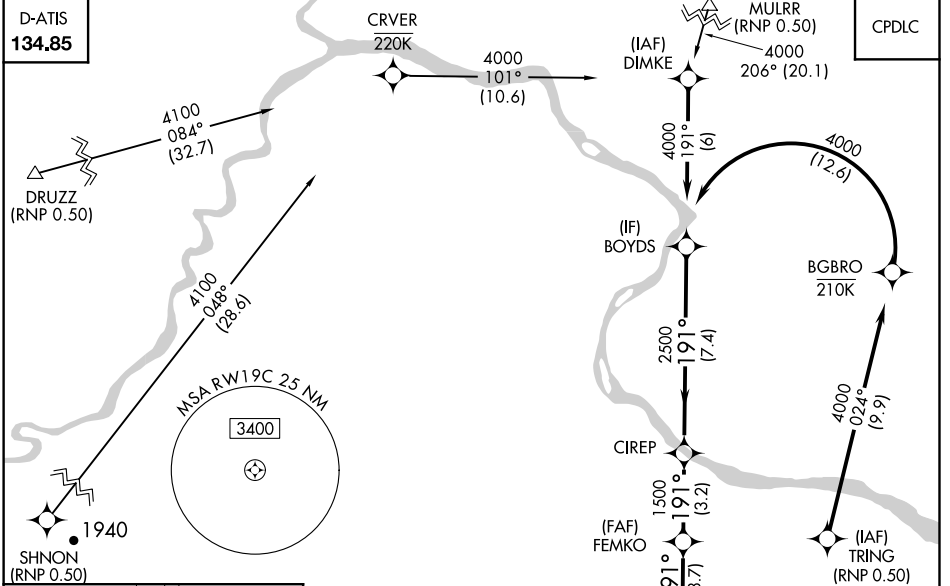
RNAV (RNP) Z RWY 19C

WASHINGTON DULLES INTL (IAD)

GPS required. For uncompensated Baro-VNAV systems, procedure NA below -14°C (6°F) or above 47°C (117°F). For inoperative ALSF, increase RNP 0.30 visibility to 1 3/4. Simultaneous approach authorized with ILS or LOC Rwy 19L, ILS Rwy 19L (Cat II). Use of FD or AP providing RNAV track guidance required during simultaneous operations.

ALSF-2  **MISSED APPROACH:** Climb to 4000 via track 191° to BOPAC and via track 265° to BLUES and hold.

POTOMAC APP CON 120.45 306.925 (241°-330°) 128.525 306.925 (091°-240°) 126.1 338.25 (331°-090°)	DULLES TOWER 120.1 317.8 (Rwys 1R/19L) 120.25 348.6 (Rwy 1C/19C) 134.425 348.6 (Rwys 1L/19R and 12/30)	GND CON 121.9 317.8 (EAST) 121.625 348.6 (WEST)	CLNC DEL 135.7 317.8
---	--	---	--------------------------------



4000	tr 191°	BOPAC	tr 265°	BLUES	BOYDS	Procedure Turn NA
VGS1 and RNAV glidepath not coincident (VGS1 Angle 3.00/TCH 72).				FEMKO	CIREP	
RWY 19C		1500	2500	4000		GP 3.00° TCH 54
		3.7 NM	3.2 NM	7.4 NM		
CATEGORY	A		B		D	
RNP 0.30 DA	740/60		468 (500-1 1/4)			

AUTHORIZATION REQUIRED

NE-3, 15 JUL 2021 to 12 AUG 2021

NE-3, 15 JUL 2021 to 12 AUG 2021