

# RNAV (RNP) Z RWY 19L

WASHINGTON DULLES INTL (IAD)

APP CRS	Rwy Idg	<b>11500</b>
<b>191°</b>	TDZE	<b>302</b>
	Apt Elev	<b>312</b>

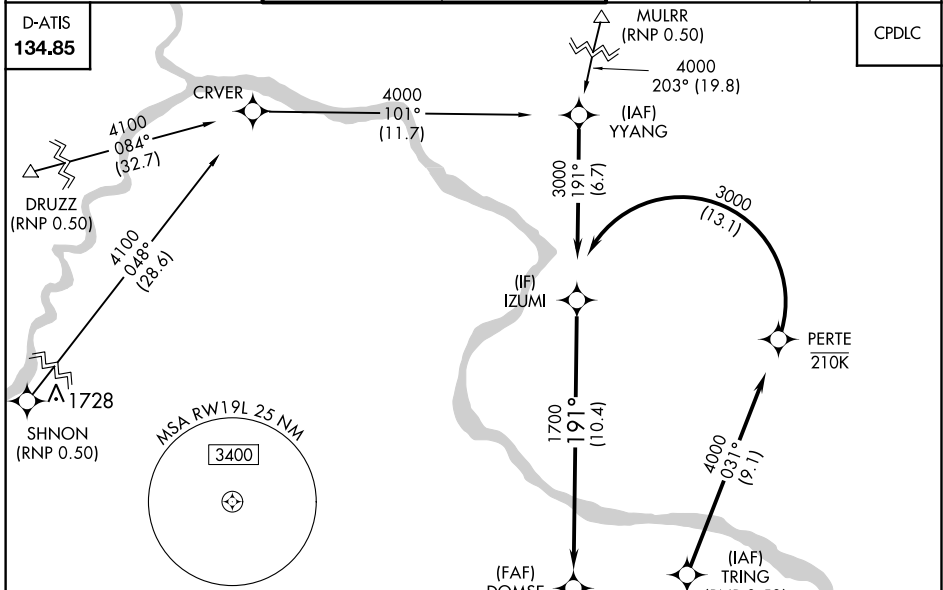
GPS required. For uncompensated Baro-VNAV systems, procedure NA below -14°C (6°F) or above 47°C (118°F). For inoperative MALS/R, increase RNP 0.30 visibility to 1½. Simultaneous approach authorized with ILS or LOC/DME Rwy 19R, ILS Rwy 19R (Cat II), ILS Rwy 19R (Cat III). Use of FD or AP providing RNAV track guidance required during simultaneous operations.

ALSF-2



MISSED APPROACH: Climb to 2000 via track 191° to WAXIN and hold.

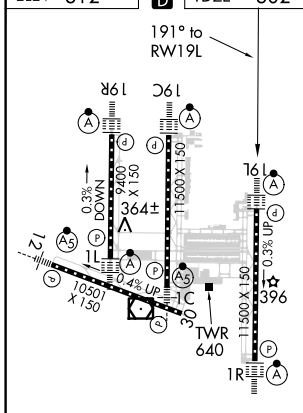
POTOMAC APP CON	DULLES TOWER	GND CON	CLNC DEL
<b>120.45 306.925</b> (241°-330°)	<b>120.1 317.8</b> (Rwy 1R/19L)	<b>121.9 317.8</b> (EAST)	<b>135.7 317.8</b>
<b>128.525 306.925</b> (091°-240°)	<b>120.25 348.6</b> (Rwy 1C/19C)	<b>121.625 348.6</b> (WEST)	
<b>126.1 338.25</b> (331°-090°)	<b>134.425 348.6</b> (Rwys 1L/19R and 12/30)		



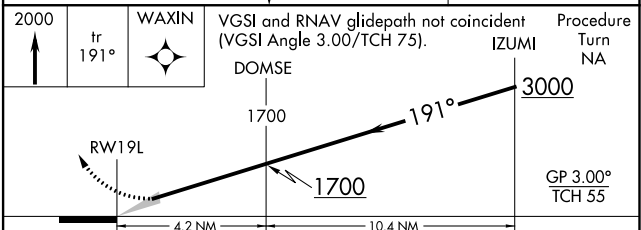
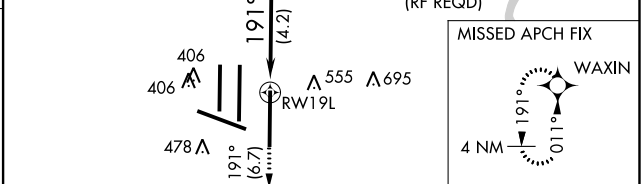
NE-3, 15 JUL 2021 to 12 AUG 2021

NE-3, 15 JUL 2021 to 12 AUG 2021

ELEV 312	<b>D</b>	TDZE 302
----------	----------	----------



TDZ/CL 1C, 1L, 1R, 12, 19C and 19R  
REIL Rwy 30  
HIRL all Rwys



CATEGORY	A	B	C	D
RNP 0.30 DA	743/50 441 (500-1)			

## AUTHORIZATION REQUIRED