

WOOLY ONE DEPARTURE (RNAV)

NE-3, 15 JUL 2021 to 12 AUG 2021

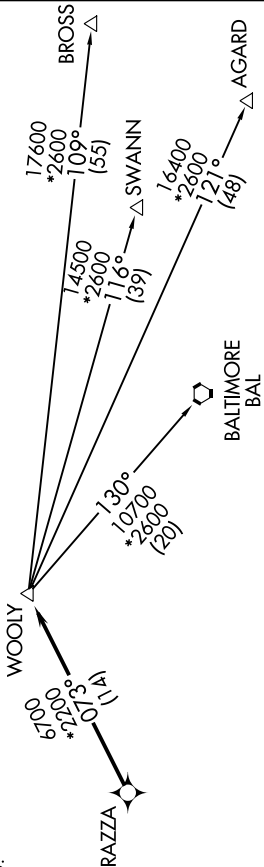
D-ATIS 134.85
 CLNC DEL 135.7 317.8
 CPDLC
 GND CON
 121.9 317.8 (EAST)
 121.625 348.6 (WEST)
 DULLES TOWER
 120.1 317.8 (Rwy 1R/19L)
 120.25 348.6 (Rwy 1C/19C)
 134.425 348.6 (Rwys 1L/19R, 12/30)
 POTOMAC DEP CON
 125.05 350.2

TAKEOFF MINIMUMS:

Rwys 1L/C/R, 19L/C/R, 30:
 Standard with minimum climb
 of 500' per NM to 820.

NOTE: RNAV 1.
 NOTE: DME/DME/IRU or GPS required.
 NOTE: RADAR required.
 NOTE: Turbojets only.

**TOP ALTITUDE:
3000**



DEPARTURE ROUTE DESCRIPTION

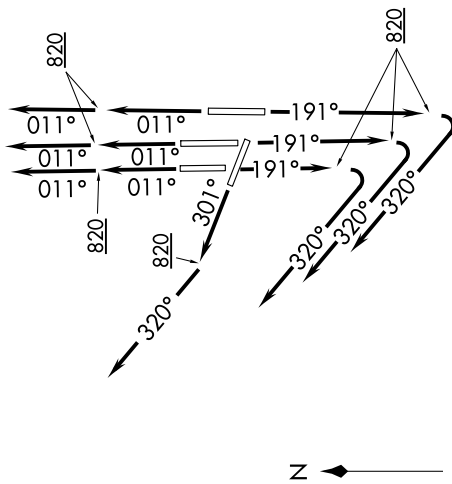
▼ TAKEOFF RUNWAYS 1L/C/R: Climb heading 011° to 820, then on heading 011° or as assigned by ATC, expect RADAR vectors to RAZZA, thence

TAKEOFF RUNWAYS 19L/C/R: Climb heading 191° to 820, then on heading 320° or as assigned by ATC, expect RADAR vectors to RAZZA, thence

TAKEOFF RUNWAY 30: Climb heading 301° to 820, then on heading 320° or as assigned by ATC, expect RADAR vectors to RAZZA, thence

. . . . on track 073° to WOOLY, then on assigned transition. Maintain 3000. Expect clearance to filed altitude within ten (10) minutes after departure.

AGARD TRANSITION (WOOLY1.AGARD)
 BALTIMORE TRANSITION (WOOLY1.BAL)
 BROSS TRANSITION (WOOLY1.BROSS)
 SWANN TRANSITION (WOOLY1.SWANN)



NOTE: Chart not to scale.

NE-3, 15 JUL 2021 to 12 AUG 2021