

VOR/DME OBK 113.0 Chan 77	APP CRS 269°	Rwy Idg TDZE Apt Elev	3419 887 887
--	------------------------	-----------------------------	---

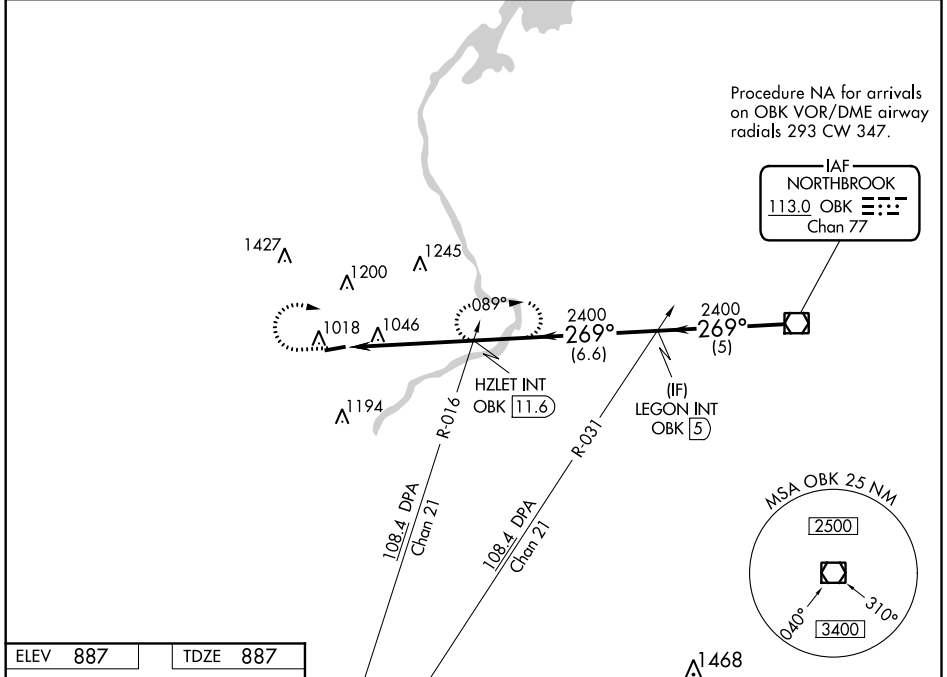
VOR RWY 26

LAKE IN THE HILLS (3CK)

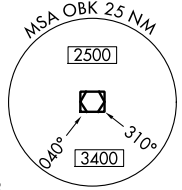
▽ Rwy 26 helicopter visibility reduction below 1 SM NA. Obtain local altimeter setting on CTAF; when not received, use Chicago DuPage altimeter setting.

△ NA MISSED APPROACH: Climb to 1900, then climbing right turn to 2500 on heading 130° and OBK VOR/DME R-269 to HZLET INT/OBK 11.6 DME and hold.

CHICAGO APP CON 120.55 306.925	UNICOM 123.05 (CTAF) 0
--	----------------------------------



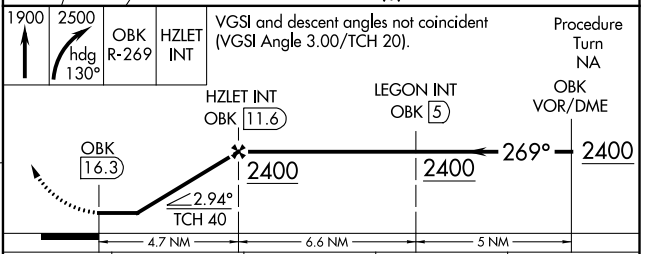
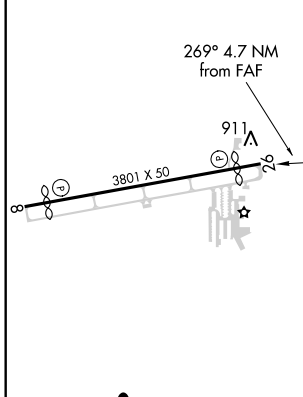
Procedure NA for arrivals on OBK VOR/DME airway radials 293 CW 347.



EC-3, 15 JUL 2021 to 12 AUG 2021

EC-3, 15 JUL 2021 to 12 AUG 2021

ELEV 887	TDZE 887
----------	----------



CATEGORY	A	B	C	D
S-26	1380-1	493 (500-1)	1380-1 ³ / ₈ 493 (500-1 ³ / ₈)	NA
CIRCLING	1380-1	493 (500-1)	1380-1 ¹ / ₂ 493 (500-1 ¹ / ₂)	NA
CHICAGO DUPAGE ALTIMETER SETTING				
S-26	1440-1	553 (600-1)	1440-1 ⁵ / ₈ 553 (600-1 ⁵ / ₈)	NA
CIRCLING	1440-1	553 (600-1)	1440-1 ⁵ / ₈ 553 (600-1 ⁵ / ₈)	NA

LIRL Rwy 8-26 0

FAF to MAP 4.7 NM

Knots	60	90	120	150	180
Min:Sec	4:42	3:08	2:21	1:53	1:34