

WAAS CH 86713 W26B	APP CRS 267°	Rwy Idg 10001 TDZE 790 Apt Elev 794
--	------------------------	--

RNAV (GPS) RWY 26L

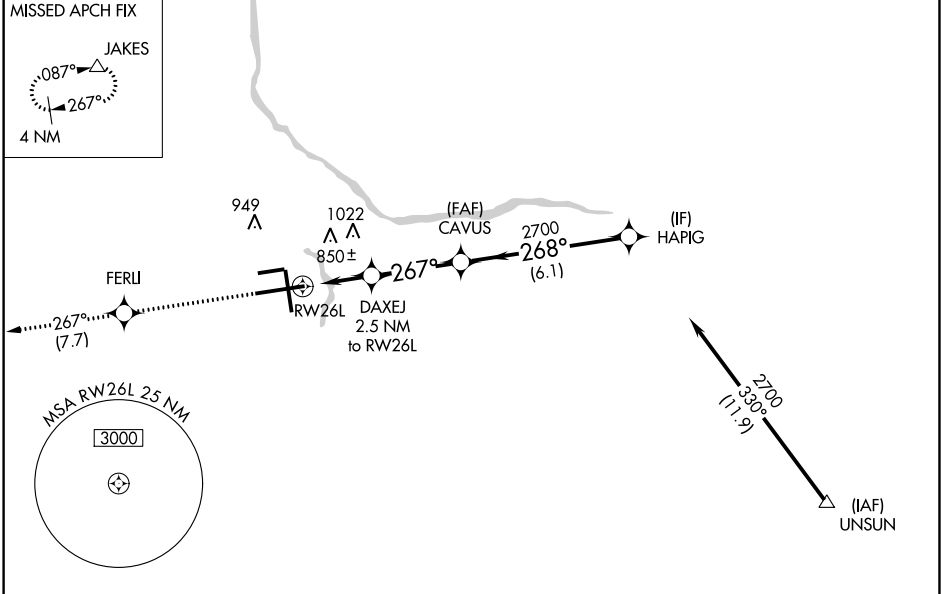
GERALD R FORD INTL (G.R.R)

ASR For uncompensated Baro-VNAV systems, LNAV/VNAV NA below -16°C (4°F) or above 54°C (130°F). DME/DME RNP-0.3 NA. For inoperative ALS, increase LNAV/VNAV Cat D visibility to RVR 5000.
** RVR 1800 authorized with use of FD or AP or HUD to DA.

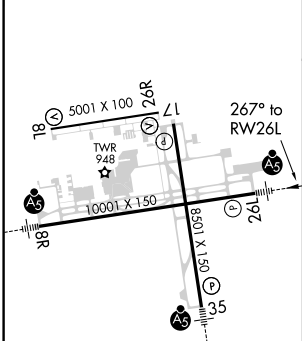
MALSR

MISSED APPROACH:
Climb to 2700 direct FERLI and track 267° to JAKES and hold.

ATIS 118.725	GREAT LAKES APP CON * 128.4 257.6	GRAND RAPIDS TOWER * 135.65 (CTAF) 339.8	GND CON 121.8	CLNC DEL 119.3	UNICOM 122.95
------------------------	---	--	-------------------------	--------------------------	-------------------------



ELEV 794	D	TDZE 790
-----------------	----------	-----------------



MIRL Rwy 8L-26L
REIL Rwy 8L, 17 and 26R
HIRL Rwy 8R-26L and 17-35L

2700	FERLI	tr 267°	JAKES	VGSi and RNAV glidepath not coincident (VGSi Angle 3.00/TCH 73).	
			DAXEJ 2.5 NM to RWY 26L	CAVUS 2700	HAPIG 2700
* LNAV only.			* 1.3 NM to RWY 26L	* 1640	GP 3.00° TCH 55
			1.3 NM	1.2 NM	3.2 NM
			6.1 NM		
CATEGORY	A	B	C	D	
LPV DA **	990/24				200 (200-½)
LNAV/VNAV DA	1114/24		324 (400-½)		1114/40 324 (400-¾)
LNAV MDA	1280/24	490 (500-½)	1280/40 490 (500-¾)	1280/50 490 (500-1)	
C CIRCLING	1280-1	486 (500-1)	1340-1½ 546 (600-1½)	1360-2 566 (600-2)	

EC-1, 15 JUL 2021 to 12 AUG 2021

EC-1, 15 JUL 2021 to 12 AUG 2021