

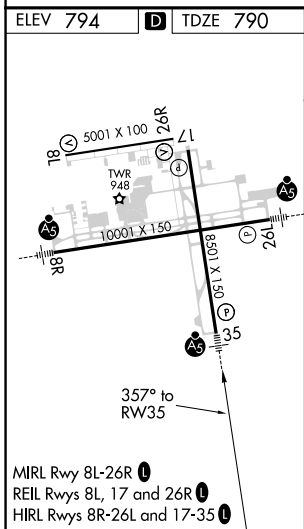
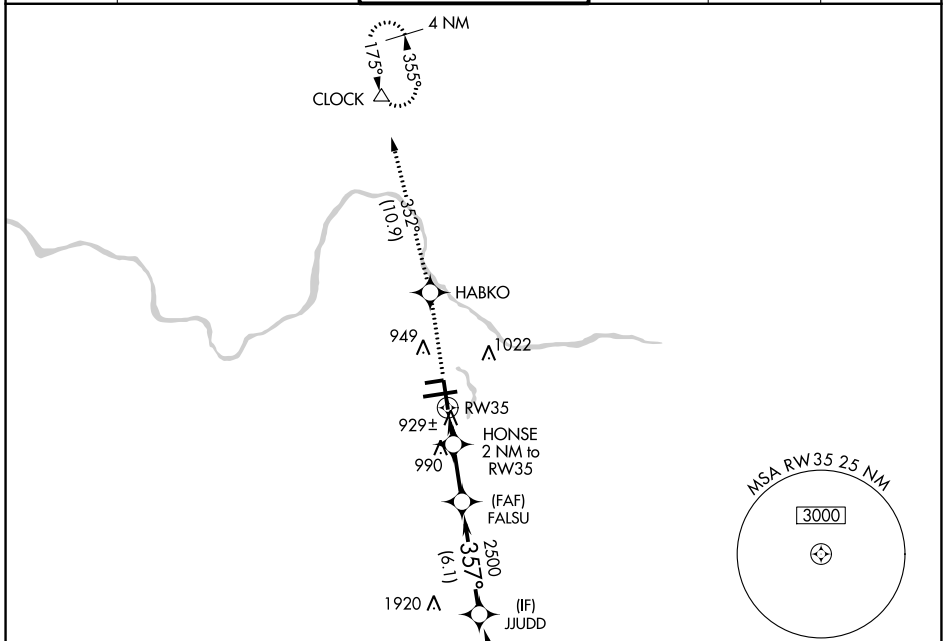
WAAS CH <b>87112</b> <b>W35A</b>	APP CRS <b>357°</b>	Rwy Idg <b>8501</b> TDZE <b>790</b> Apt Elev <b>794</b>
--	------------------------	---

# RNAV (GPS) RWY 35

GERALD R FORD INTL (G.R.R.)

RNP APCH.	MALSR	MISSED APPROACH: Climb to 3000 direct HABKO and track 352° to CLOCK and hold.
ASR	AS	For uncompensated Baro-VNAV systems, LNAV/VNAV NA below -16°C or above 54°C. For inop ALS, increase LNAV Cat D visibility to RVR 6000. ** RVR 1800 authorized with use of FD or AP or HUD to DA.

ATIS <b>118.725</b>	GREAT LAKES APP CON * <b>128.4 257.6</b>	GRAND RAPIDS TOWER * <b>135.65 (CTAF) 0 339.8</b>	GND CON <b>121.8</b>	CLNC DEL <b>119.3</b>	UNICOM <b>122.95</b>
------------------------	---	--	-------------------------	--------------------------	-------------------------



ELEV 794	D	TDZE 790	Procedure NA for arrivals at BOHRR on V285 southbound.			
3000	HABKO	CLOCK	VGSi and RNAV glidepath not coincident (VGSi Angle 3.00/TCH 74).			
↑	✧	tr 352°	JUDD			
* LNAV only.	HONSE 2 NM to RW35	FALSU	3000			
	* 1 NM to RW35	2500	357°			
	RW35	* 1480	2500			
	1 NM	1 NM	3.1 NM	6.1 NM	GP 3.00° TCH 55	
CATEGORY	A	B	C	D		
LPV DA**	990/24 200 (200-½)					
LNAV/VNAV DA	1236/50 446 (500-1)					
LNAV MDA	1180/24 390 (400-½)		1180/35 390 (400-¾)		1180/50 390 (400-1)	
CIRCLING	1260-1 466 (500-1)		1340-1½ 546 (600-1½)		1360-2 566 (600-2)	

EC-1, 15 JUL 2021 to 12 AUG 2021

EC-1, 15 JUL 2021 to 12 AUG 2021