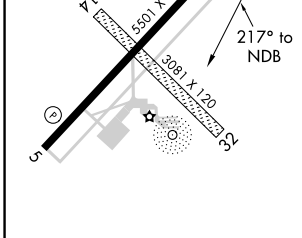
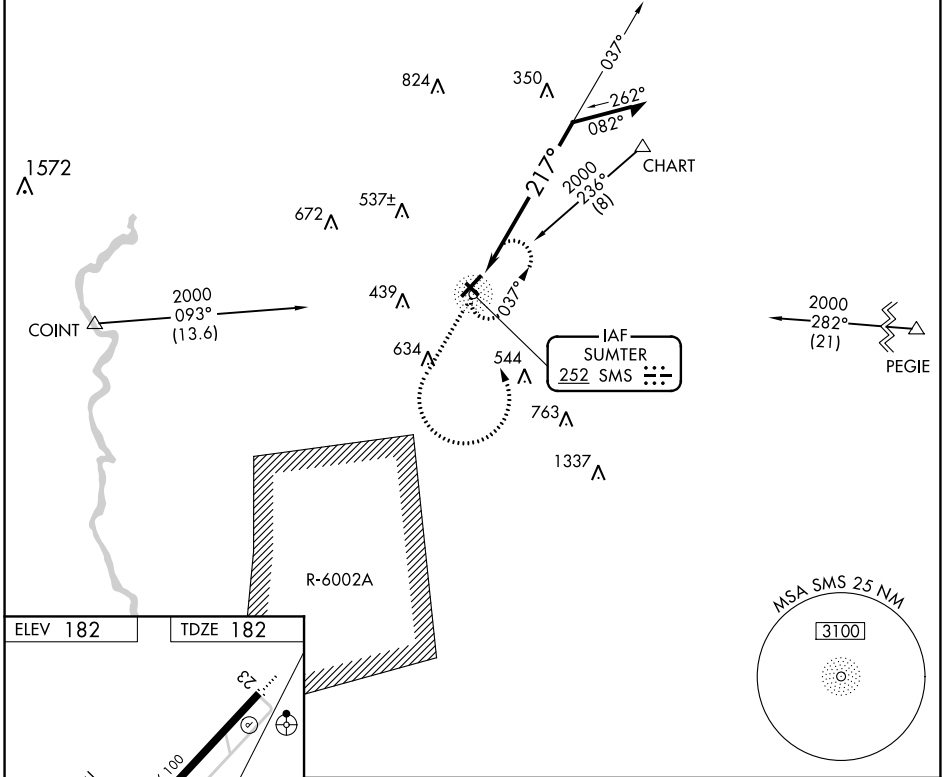


NDB SMS 252	APP CRS 217°	Rwy Idg TDZE Apt Elev	5501 182 182
-----------------------	------------------------	-----------------------------	---

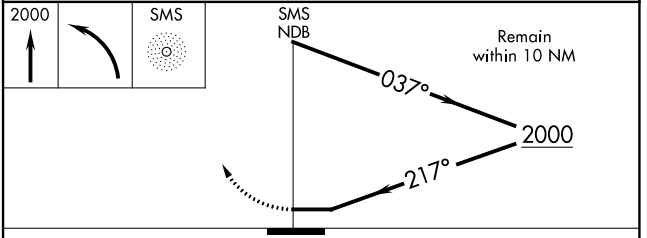
NDB RWY 23

SUMTER (SMS)

<p>⚠ Inoperative table does not apply to S-23 Cat C. Procedure NA when R-6002A is active. Circling NA to Rwy 14-32. When local altimeter setting not received, use Camden altimeter setting and increase all MDA 80 feet, increase S-23 Cat C visibility 1/2 SM, Circling Cat C/D visibility 1/2 SM.</p>	<p>ODALS </p>	<p>MISSED APPROACH: Climb to 2000 then climbing left turn direct SMS NDB and hold.</p>
<p>AWOS-3 118.075</p>	<p>SHAW APP CON ★ 125.4</p>	<p>UNICOM 122.7 (CTAF)</p>



ELEV 182	TDZE 182
<p>MIRL Rwy 5-23 Ⓛ REL Rws 5 and 23 Ⓛ</p>	



CATEGORY	A	B	C	D
S-23	700-3/4 518 (600-3/4)		700-1 1/2 518 (600-1 1/2)	700-1 3/4 518 (600-1 3/4)
C CIRCLING	700-1 518 (600-1)		1000-2 1/2 818 (900-2 1/2)	1000-2 3/4 818 (900-2 3/4)

SE-2, 15 JUL 2021 to 12 AUG 2021

SE-2, 15 JUL 2021 to 12 AUG 2021