

WAAS CH <b>63119</b> <b>W06A</b>	APP CRS <b>063°</b>	Rwy Idg TDZE Apt Elev	<b>5013</b> <b>394</b> <b>398</b>
----------------------------------------	------------------------	-----------------------------	-----------------------------------------

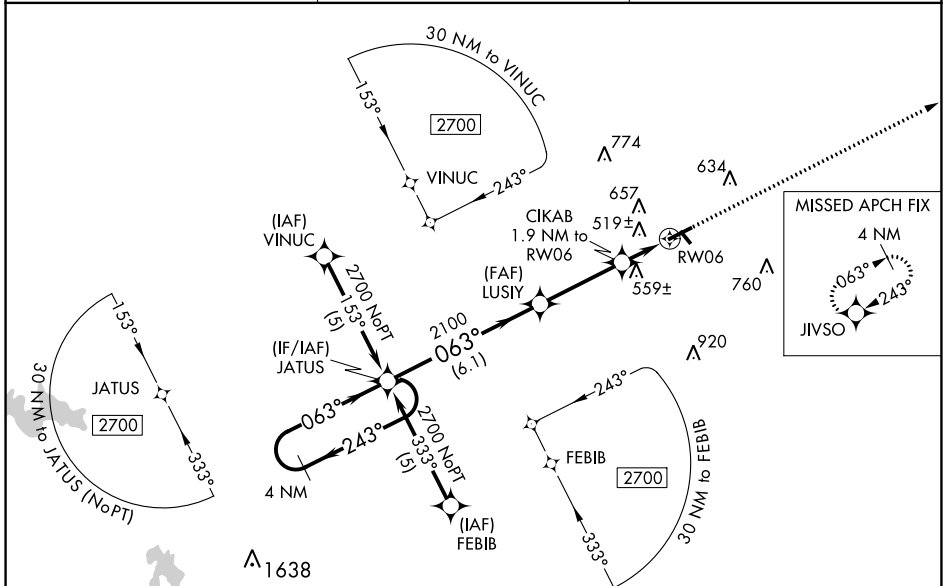
# RNAV (GPS) RWY 6

HARRISBURG-RALEIGH (HSB)

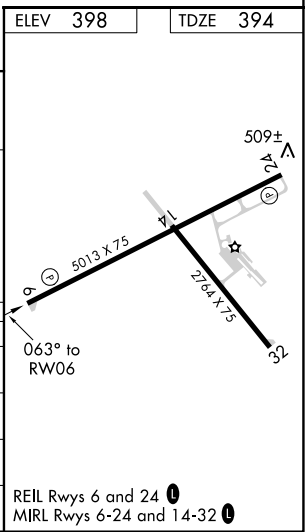
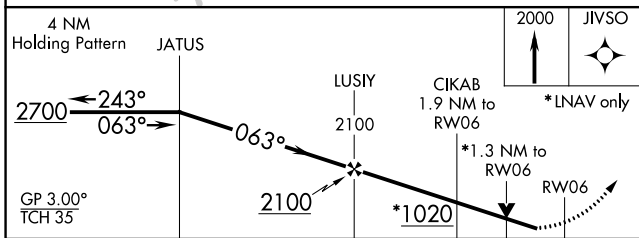
**⚠** Baro-VNAV NA when using Williamson County Rgnl altimeter setting. For uncompensated Baro-VNAV systems, LNAV/VNAV NA below -15°C (5°F) or above 48°C (118°F). DME/DME RNP-0.3 NA. Visibility reduction by helicopters NA. When local altimeter setting not received, use Williamson County Rgnl altimeter setting and increase all DA 62 feet and all MDA 80 feet; increase LPV all Cats, LNAV/VNAV all Cats, LNAV Cats C and D and Circling Cats C and D visibility ¼ mile. VDP NA with Williamson County Rgnl altimeter setting.

**MISSED APPROACH:**  
Climb to 2000 direct JIVSO and hold.

AWOS-3 <b>135.925</b>	KANSAS CITY CENTER <b>127.475 346.275</b>	UNICOM <b>122.8 (CTAF) 0</b>
--------------------------	----------------------------------------------	---------------------------------



ELEV <b>398</b>	TDZE <b>394</b>
-----------------	-----------------



CATEGORY	A	B	C	D
LPV DA		682-1	288 (300-1)	
LNAV/VNAV DA		958-2	564 (600-2)	
LNAV MDA	820-1	426 (500-1)	820-1¼	426 (500-1¼)
CIRCLING	880-1 482 (500-1)	1020-1 622 (700-1)	1020-1¾ 622 (700-1¾)	1020-2 622 (700-2)

REIL Rwy 6 and 24 **0**  
MIRL Rwy 6-24 and 14-32 **0**

EC-3, 15 JUL 2021 to 12 AUG 2021

EC-3, 15 JUL 2021 to 12 AUG 2021