

WAAS CH 45934 W06A	APP CRS 054°	Rwy Idg TDZE Apt Elev	3757 1430 1444
--	------------------------	-----------------------------	---

RNAV (GPS) RWY 6

CABLE (CCB)

RNP APCH.

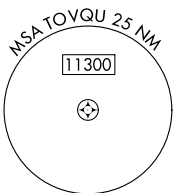
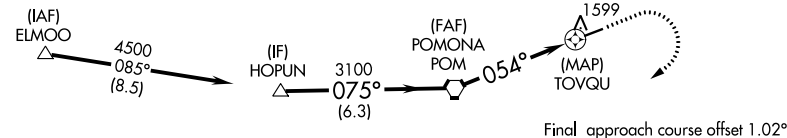
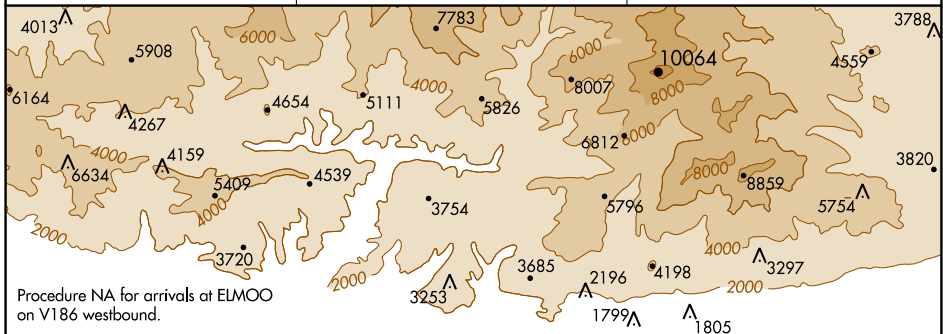
NA Circling NA northwest of Rwy 6-24. Rwy 6 helicopter visibility reduction below 3/4 SM NA. Circling Rwy 24 NA at night. When local altimeter setting not received, use Ontario altimeter setting and increase all MDA 100 feet.

MISSED APPROACH: Climb to 1900 then climbing right turn to 5500 direct ADAMM and hold, continue climb-in-hold to 5500.

AWOS-3P
119.525

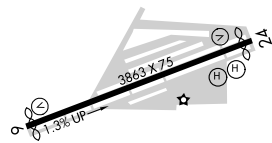
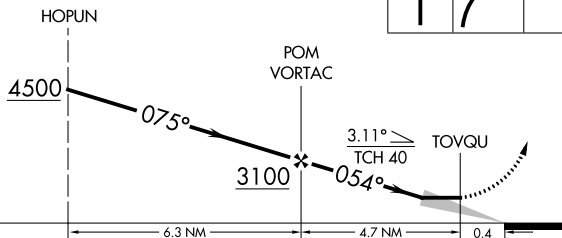
SOCAL APP CON
125.5 349.0

UNICOM
123.0 (CTAF) **1**



ELEV 1444	TDZE 1430
-----------	-----------

VGSI and descent angles not coincident (VGSI Angle 4.00/TCH 34).



CATEGORY	A	B	C	D
LP MDA	1780-1	350 (400-1)	1780-1 1/8 350 (400-1 1/8)	NA
LNAV MDA	1940-1	510 (500-1)	1940-1 1/8 510 (500-1 1/8)	NA
C CIRCLING	2020-1	576 (600-1)	2140-2 696 (700-2)	NA

MIRL Rwy 6-24 **1**

SW-3, 15 JUL 2021 to 12 AUG 2021

SW-3, 15 JUL 2021 to 12 AUG 2021