

WAAS CH 72730 W22A	APP CRS 222°	Rwy Idg TDZE Apt Elev	5981 630 630
--	------------------------	-----------------------------	---

RNAV (GPS) RWY 22

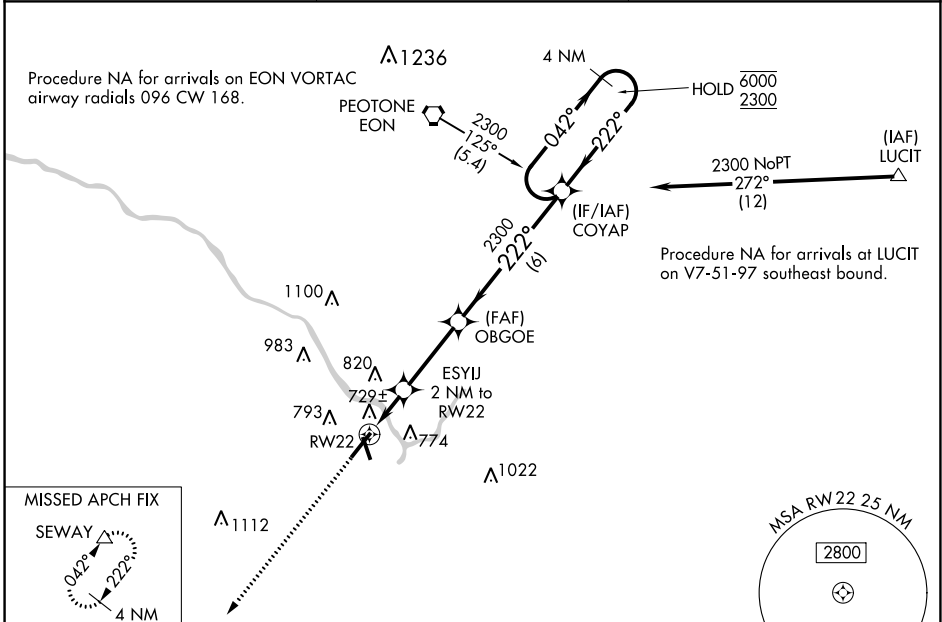
GREATER KANKAKEE (IKK)

RNP APCH.

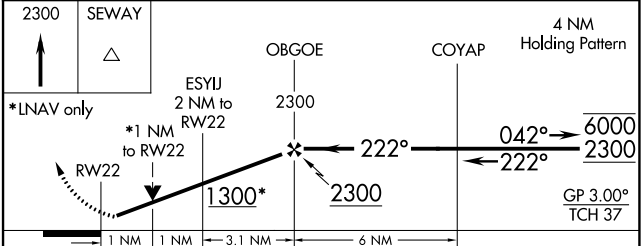
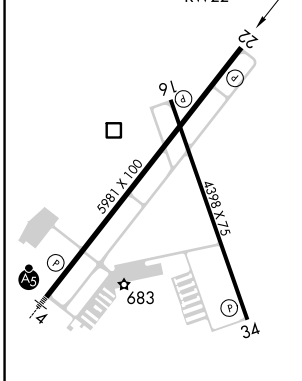
⚠ Circling Rwy 16, 34 NA at night. Rwy 22 helicopter visibility reduction below ¾ SM NA.
⚠ For uncompensated Baro-VNAV systems, LNAV/VNAV NA below -16°C or above 54°C.

MISSED APPROACH:
Climb to 2300 direct SEWAY and hold.

AWOS-3 128.475	CHICAGO CENTER 132.5 284.7	UNICOM 123.0 (CTAF) 0
--------------------------	--------------------------------------	---------------------------------



ELEV 630	TDZE 630
----------	----------



CATEGORY	A	B	C	D
LPV DA		880-7/8	250 (300-7/8)	
LNAV/VNAV DA		910-1	280 (300-1)	
LNAV MDA		980-1	350 (400-1)	
C CIRCLING	1080-1 450 (500-1)	1100-1 470 (500-1)	1140-1½ 510 (600-1½)	1340-2¼ 710 (800-2¼)

REIL Rwy 22 **0**
 HIRL Rwy 4-22 **0**
 MIRL Rwy 16-34 **0**

EC-3, 15 JUL 2021 to 12 AUG 2021

EC-3, 15 JUL 2021 to 12 AUG 2021