

APP CRS	Rwy Idg	<b>5000</b>
<b>096°</b>	TDZE	<b>755</b>
	Apt Elev	<b>755</b>

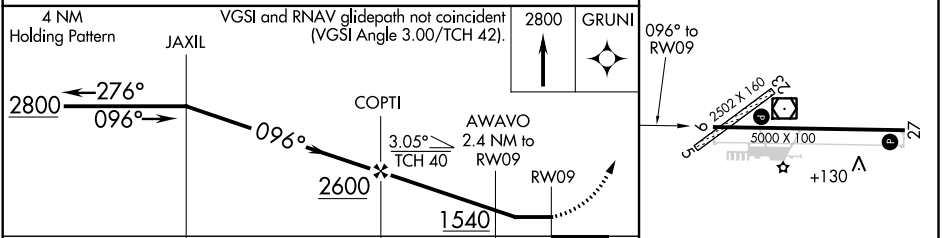
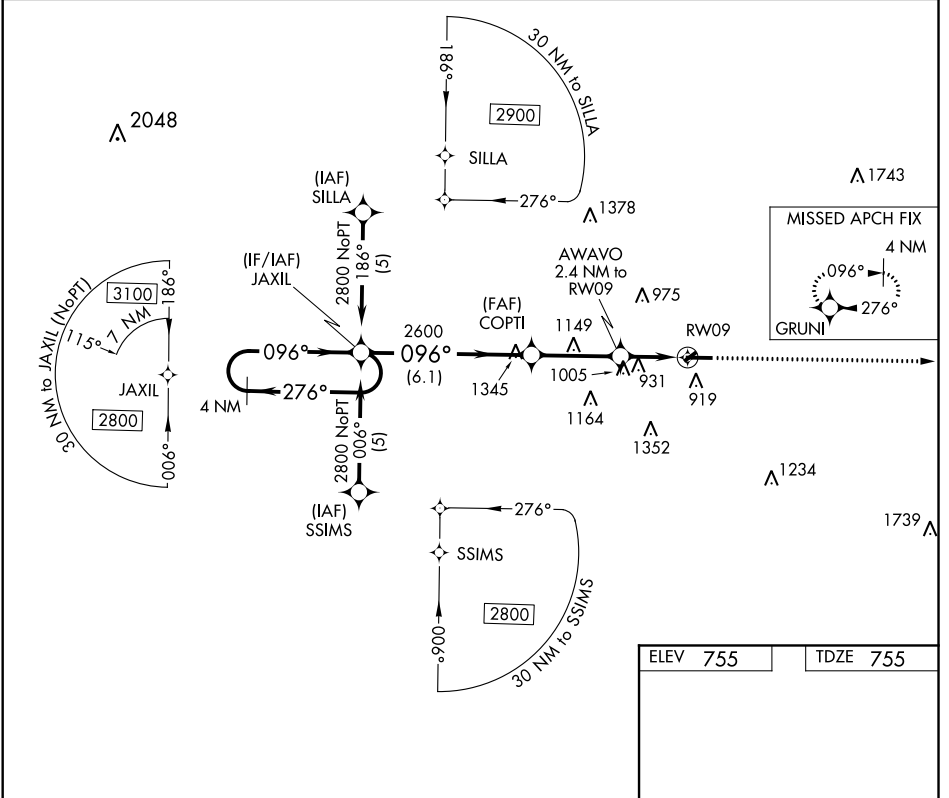
# RNAV (GPS) RWY 9

MOUNT PLEASANT MUNI (MOP)

**⚠** DME/DME RNP-0.3 NA. When local altimeter setting not received use Alma altimeter setting and increase all MDA 60 feet, increase LNAV Cat C/D and Circling Cat C visibility ¼ mile. Circling NA to Rwy's 5 and 23. Rwy 9 helicopter visibility reduction below ¾ SM NA.

MISSED APPROACH: Climb to 2800 direct GRUNI and hold.

AWOS-3 <b>133.025</b>	GREAT LAKES APP CON* <b>126.45 235.625</b>	UNICOM <b>123.0</b> (CTAF) <b>📻</b>
--------------------------	---	--



CATEGORY	A	B	C	D	REIL Rwy's 9 and 27 <b>📻</b> MIRL Rwy 9-27 <b>📻</b>
LNAV MDA	1320-1	565 (600-1)	1320-1½ 565 (600-1½)	1320-1¾ 565 (600-1¾)	
CIRCLING	1320-1	565 (600-1)	1320-1½ 565 (600-1½)	1360-2 605 (700-2)	

EC-1, 15 JUL 2021 to 12 AUG 2021

EC-1, 15 JUL 2021 to 12 AUG 2021