

VOR/DME MOP 110.6 Chan 43	APP CRS 284°	Rwy Idg TDZE 753 Apt Elev 755	5000
---	------------------------	---	-------------

VOR RWY 27

MOUNT PLEASANT MUNI (MOP)

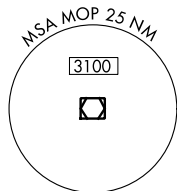
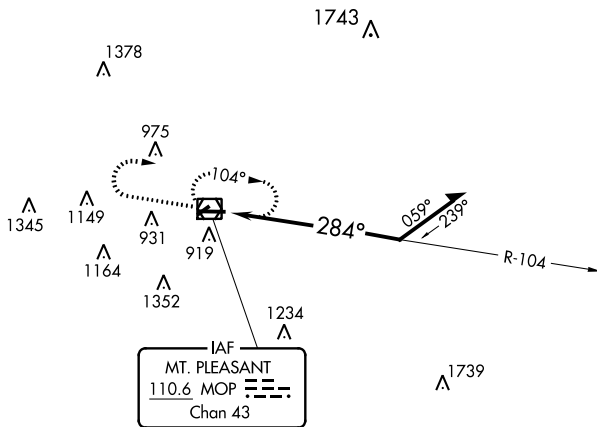
⚠ When local altimeter setting not received, use Alma altimeter setting and increase all MDA 60 feet, S-27 Cat D and Circling Cat C visibilities ¼ mile. VDP NA when using Alma altimeter setting. Circling NA to Rwy 5 and 23. Rwy 27 helicopter visibility reduction below ¾ SM NA.

MISSED APPROACH: Climb to 2400 then right turn direct MOP VOR/DME and hold.

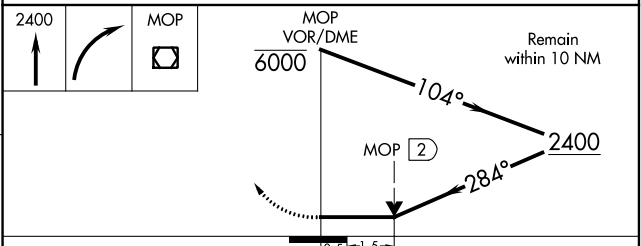
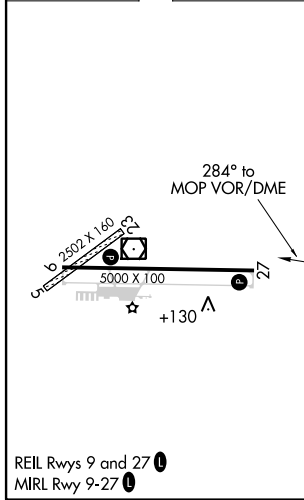
AWOS-3
133.025

GREAT LAKES APP CON *
126.45 235.625

UNICOM
123.0 (CTAF) **0**



ELEV 755	TDZE 753
----------	----------



CATEGORY	A	B	C	D
S-27	1260-1	507 (600-1)	1260-1½	507 (600-1½)
CIRCLING	1260-1	505 (600-1)	1320-1½ 565 (600-1½)	1360-2 605 (700-2)

EC-1, 15 JUL 2021 to 12 AUG 2021

EC-1, 15 JUL 2021 to 12 AUG 2021