

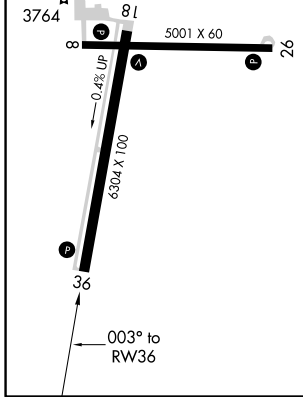
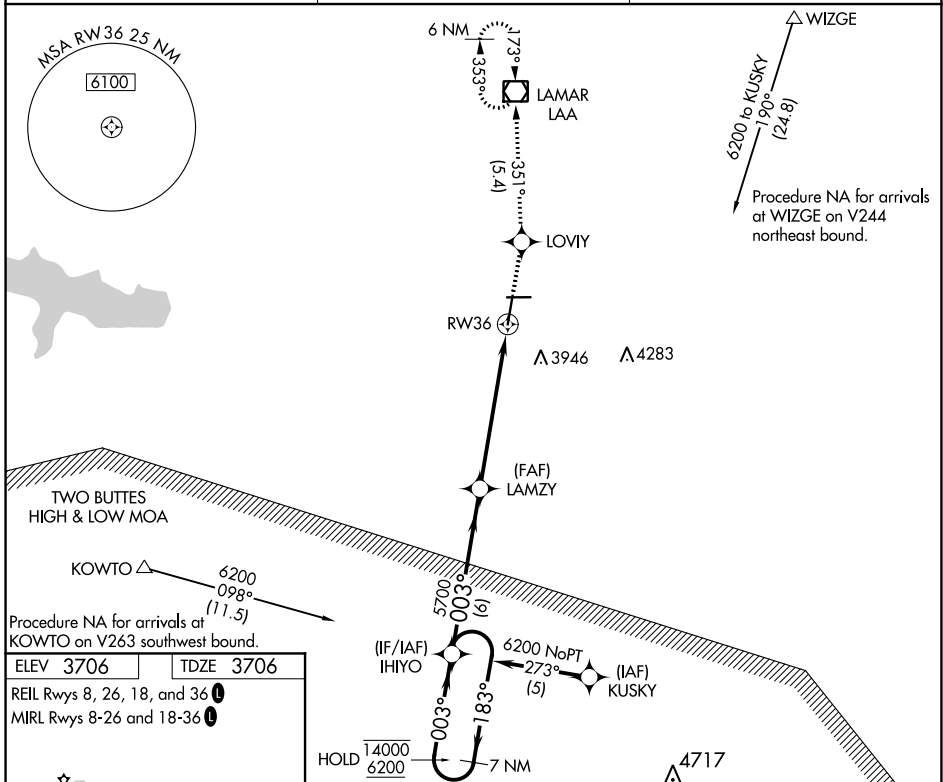
WAAS CH 99400 W36A	APP CRS 003°	Rwy Idg TDZE Apt Elev	6304 3706 3706
--	------------------------	-----------------------------	---

RNAV (GPS) RWY 36

SOUTHEAST COLORADO RGNL (L.A.A)

RNP APCH.	MISSED APPROACH: Climb to 6000 direct LOVIY and left turn on track 351° to LAA VOR/DME and hold.
<p>▼ Rwy 36 helicopter visibility reduction below 3/4 SM NA. For uncompensated</p> <p>▲ Baro-VNAV systems, LNAV/VNAV NA below -22°C or above 54°C.</p>	

ASOS 135.625	DENVER CENTER 133.4 377.175	UNICOM 122.8 (CTAF)
------------------------	---------------------------------------	-------------------------------



VGSI and RNAV glidepath not coincident (VGSI Angle 3.00/TCH 45). 7 NM Holding Pattern IHIYO		6000 ↑ LOVIY	LAA □
14000 6200	← 183° 003° →	5700 *2 NM to RWY36	*LNAV only.
GP 3.05° TCH 50	5700 ↘	RWY36	
	← 6 NM →	← 4 NM →	← 2 NM →

SW-1, 15 JUL 2021 to 12 AUG 2021

SW-1, 15 JUL 2021 to 12 AUG 2021