

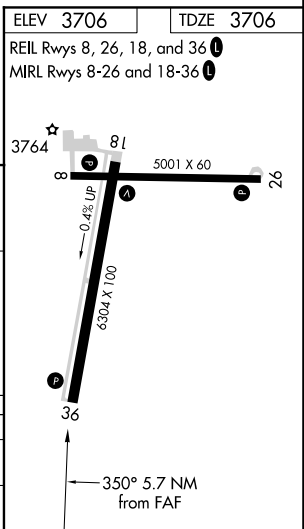
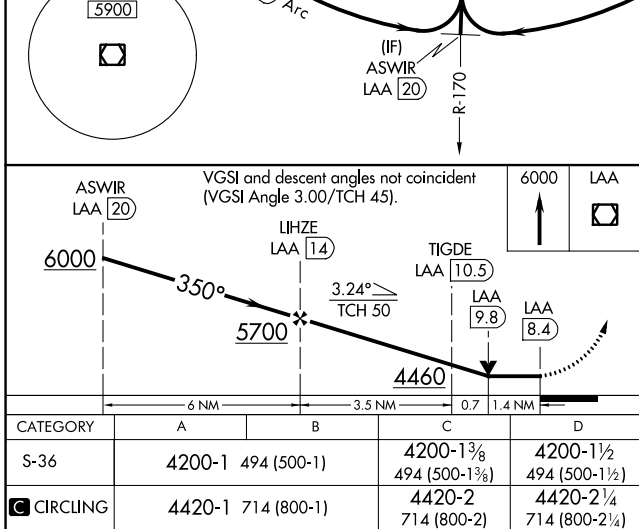
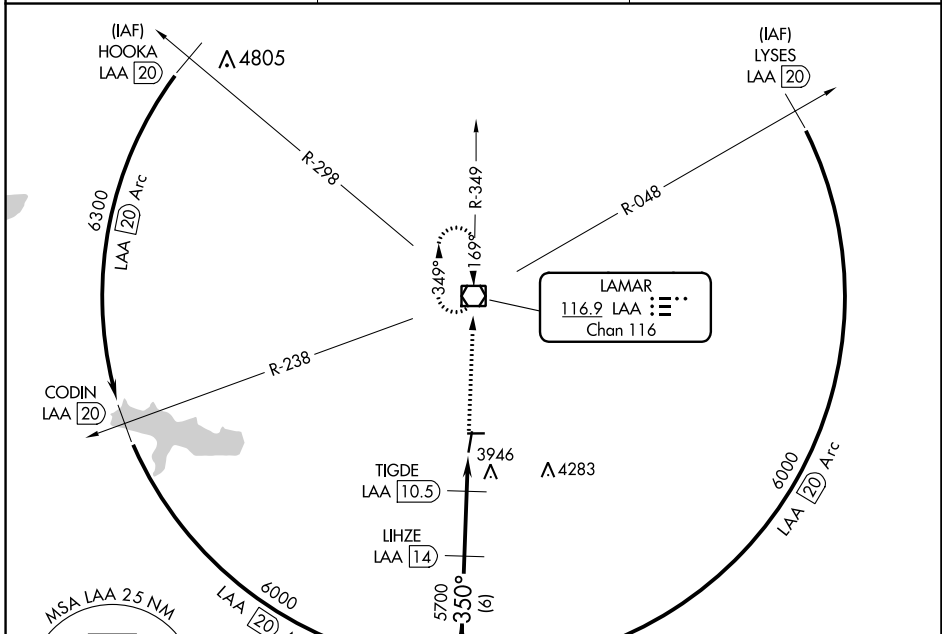
VOR/DME LAA 116.9 Chan 116	APP CRS 350°	Rwy Idg TDZE Apt Elev	6304 3706 3706
--	------------------------	-----------------------------	---

VOR RWY 36

SOUTHEAST COLORADO RGNL (L.A.A)

DME required.	MISSED APPROACH: Climb to 6000 direct LAA VOR/DME and hold.
▼ ▲ Rwy 36 helicopter visibility reduction below 3/4 SM NA.	

ASOS 135.625	DENVER CENTER 133.4 377.175	UNICOM 122.8 (CTAF) 0
------------------------	---------------------------------------	---------------------------------



SW-1, 15 JUL 2021 to 12 AUG 2021

SW-1, 15 JUL 2021 to 12 AUG 2021