

EC-1, 15 JUL 2021 to 12 AUG 2021

**TOP ALTITUDE:  
ASSIGNED BY ATC**

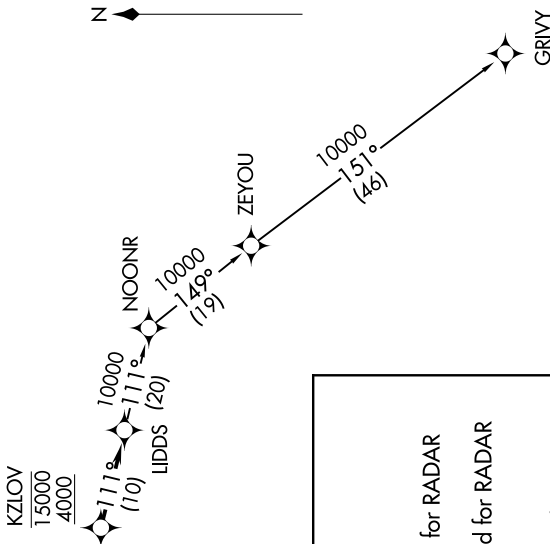


**TAKEOFF MINIMUMS:**

Rwy 9: Standard.

Rwy 27: Standard with minimum climb of 476' per NM to 1500.

AWOS-3  
119.475  
CTAF  
123.05  
DETROIT DEP CON  
134.3 284.0



NOTE: RNAV 1.  
 NOTE: RADAR required.  
 NOTE: DME/DME/IRU or GPS required.  
 NOTE: Turbojet departures at/above 10000, maintain 280K until advised by ATC.

**DEPARTURE ROUTE DESCRIPTION**

**TAKEOFF RUNWAY 9:** Climb on heading 096° to 1400 then as assigned for RADAR vectors to cross KZIOV between 4000 and 15000, thence....  
**TAKEOFF RUNWAY 27:** Climb on heading 276° to 1500 then as assigned for RADAR vectors to cross KZIOV between 4000 and 15000, thence....  
 ....on track 111° to LIDDS, then on (transition). Maintain ATC assigned altitude, expect filed altitude 10 minutes after departure.

**GRIVY TRANSITION (LIDDS2.GRIVY):**

NOTE: Chart not to scale.