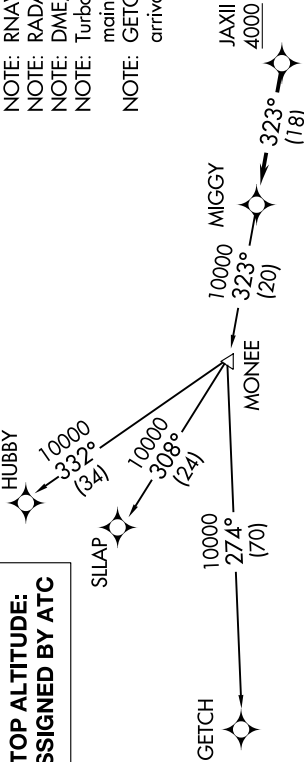


EC-1, 15 JUL 2021 to 12 AUG 2021

**TOP ALTITUDE:  
ASSIGNED BY ATC**

AWOS-3  
119.475  
CTAF  
123.05  
DETROIT DEP CON  
134.3 284.0

- NOTE: RNAV 1.
- NOTE: RADAR required.
- NOTE: DME/DME/IRU or GPS required.
- NOTE: Turbojet departures at/above 10000, maintain 280K until advised by ATC.
- NOTE: GETCH TRANSITION: For use by KMKE area arrivals only, or as assigned by ATC.



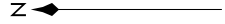
**DEPARTURE ROUTE DESCRIPTION**

**TAKEOFF RUNWAY 9:** Climb on heading 096° to 1400 then as assigned for RADAR vectors to cross JAXII at or above 4000, thence....

**TAKEOFF RUNWAY 27:** Climb on heading 276° to 1500 then as assigned for RADAR vectors to cross JAXII at or above 4000, thence....

.....on track 323° to MIGGY, then on (transition). Maintain ATC assigned altitude, expect filed altitude 10 minutes after departure.

- GETCH TRANSITION (MIGGY2.GETCH):
- HUBBY TRANSITION (MIGGY2.HUBBY):
- SILAP TRANSITION (MIGGY2.SILAP):



**TAKEOFF MINIMUMS:**

- Rwy 9: Standard.
- Rwy 27: Standard with minimum climb of 476' per NM to 1500.

NOTE: Chart not to scale.

EC-1, 15 JUL 2021 to 12 AUG 2021