

WAAS CH <b>82508</b> <b>W14A</b>	APP CRS <b>142°</b>	Rwy Idg <b>4755</b> TDZE <b>23</b> Apt Elev <b>23</b>
--	------------------------	---

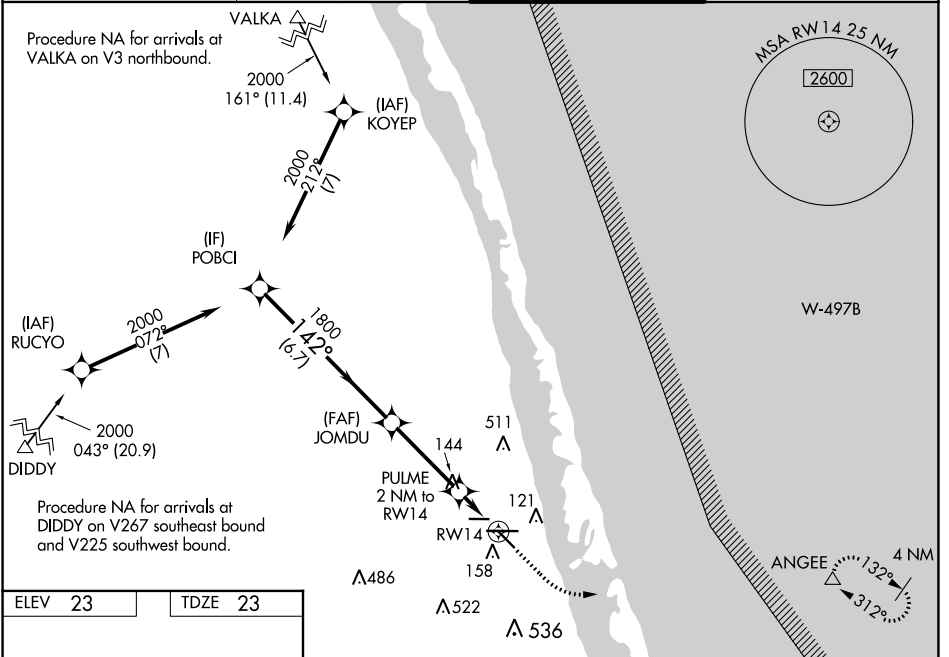
# RNAV (GPS) RWY 14

TREASURE COAST INTL (FPR)

**⚠** Baro-VNAV NA when using Vero Beach altimeter setting. For uncompensated Baro-VNAV systems, LNAV/VNAV NA below -15°C (5°F) or above 43°C (109°F). When VGSI inop, Straight-in/Circling Rwy 14 procedure NA at night. DME/DME RNP-0.3 NA. Helicopter visibility below 1 SM NA. When local altimeter setting not received, use Vero Beach altimeter setting and increase LPV DA to 303, LNAV/VNAV DA to 378 and all MDA 40 feet; increase LNAV visibility Cats C/D ½ SM; increase Circling visibility Cat C/D ¼ SM.

**⚠** MISSED APPROACH: Climb to 480 then climbing left turn to 2000 direct ANGEE and hold.

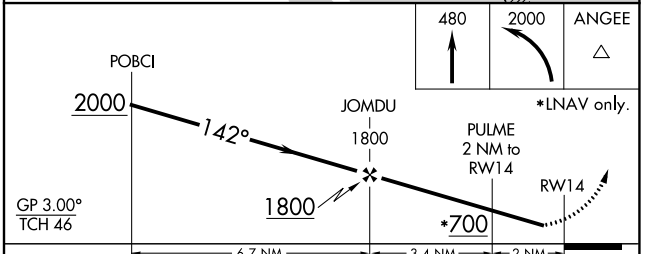
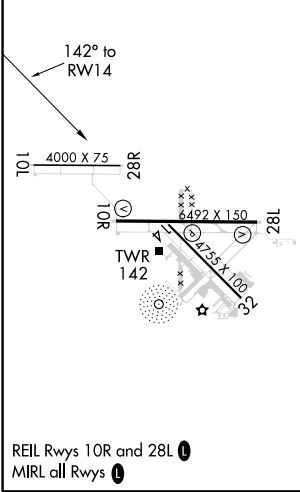
ATIS <b>134.825</b>	PALM BEACH APP CON <b>132.8</b>	FORT PIERCE TOWER* <b>128.2 (CTAF) 0</b>	GND CON <b>119.55</b>
------------------------	------------------------------------	---	--------------------------



SE-3, 15 JUL 2021 to 12 AUG 2021

SE-3, 15 JUL 2021 to 12 AUG 2021

ELEV 23	TDZE 23
---------	---------



CATEGORY	A	B	C	D
LPV DA		280-1	257 (300-1)	
LNAV/VNAV DA		355-1½	332 (400-1½)	
LNAV MDA		400-1	377 (400-1)	
<b>C</b> CIRCLING	460-1 437 (500-1)	480-1 457 (500-1)	880-2½ 857 (900-2½)	880-2¾ 857 (900-2¾)