

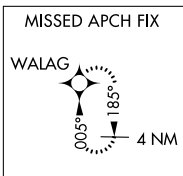
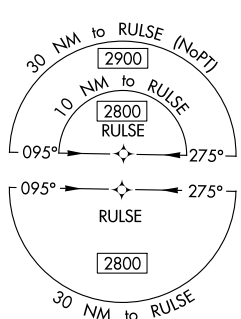
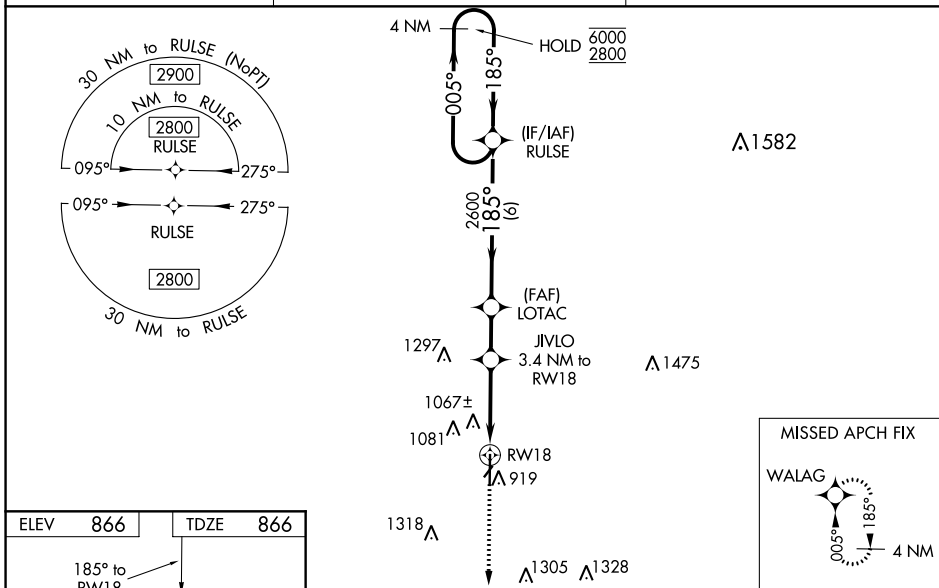
WAAS CH <b>93699</b> <b>W18A</b>	APP CRS <b>185°</b>	Rwy Idg TDZE Apt Elev	<b>6503</b> <b>866</b> <b>866</b>
--	------------------------	-----------------------------	---

# RNAV (GPS) RWY 18

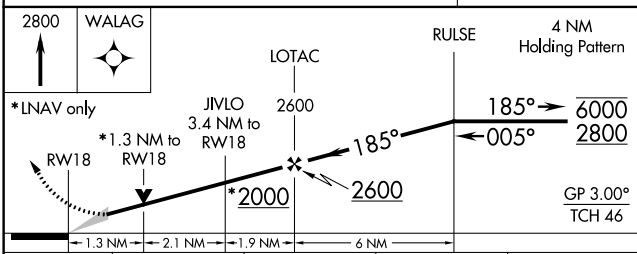
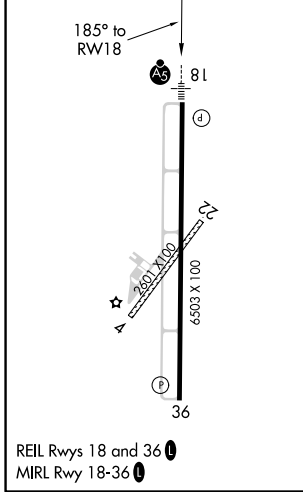
METTEL FIELD (CEV)

RNP APCH.	MALSR MISSED APPROACH: Climb to 2800 direct WALAG and hold.
For uncompensated Baro-VNAV systems, LNAV/VNAV NA below -16°C or above 54°C. VDP and Baro-VNAV NA when using James M. Cox Dayton Intl altimeter setting. Circling Rwy 4, 22 NA at night. For inop ALS increase LPV all Cats visibility to 1 SM, LNAV/VNAV all Cats visibility to 1 3/8 SM, and LNAV Cats A/B visibility to 1 SM. For inop ALS when using James M. Cox Dayton Intl altimeter setting, increase LPV all Cats visibility to 1 SM, LNAV/VNAV all Cats visibility to 1 3/8 SM. When local altimeter setting not received, use James M. Cox Dayton Intl altimeter setting and increase all DA 121 feet and all MDA 140 feet: increase LPV and LNAV/VNAV all Cats and LNAV Cat C/D visibility 3/8 SM, and Circling Cat C/D visibility 1/2 SM.	

AWOS-3 <b>118.325</b>	COLUMBUS APP CON <b>118.425 352.05</b>	UNICOM <b>122.8</b> (CTAF)
--------------------------	---	-------------------------------



ELEV 866	TDZE 866
----------	----------



CATEGORY	A	B	C	D
LPV DA		1116-1/2	250 (300-1/2)	
LNAV/VNAV DA		1385-1	519 (600-1)	
LNAV MDA	1320-1/2	454 (500-1/2)	1320-7/8	454 (500-7/8)
CIRCLING	1440-1 574 (600-1)	1540-1 674 (700-1)	1620-2 1/4 754 (800-2 1/4)	1620-2 1/2 754 (800-2 1/2)

EC-2, 15 JUL 2021 to 12 AUG 2021

EC-2, 15 JUL 2021 to 12 AUG 2021