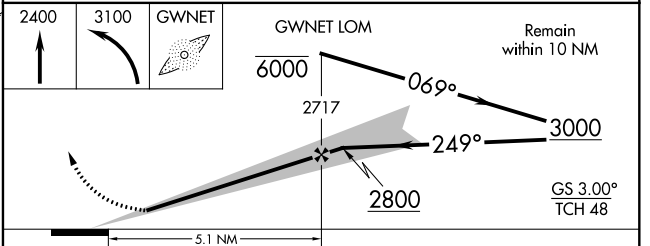
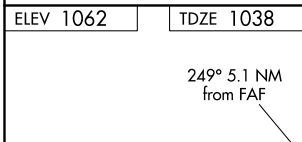
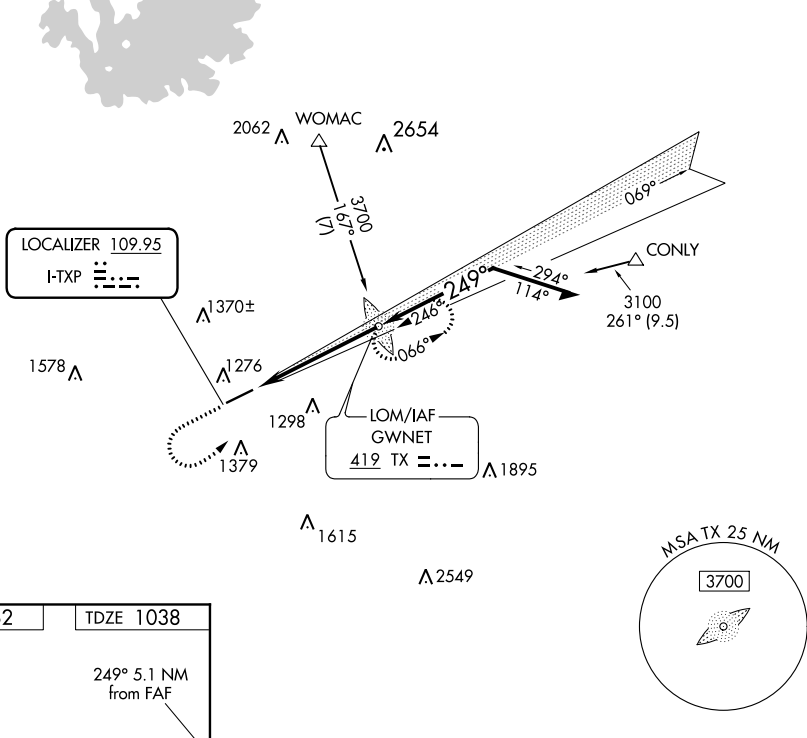


LOC I-TXP <b>109.95</b>	APP CRS <b>249°</b>	Rwy ldg TDZE Apt Elev	<b>6000</b> <b>1038</b> <b>1062</b>
----------------------------	------------------------	-----------------------------	---

# ILS or LOC RWY 25

GWINNETT COUNTY-BRISCOE FLD (LZU)

ADF or RADAR required.					MALSR 		MISSED APPROACH: Climb to 2400 then climbing left turn to 3100 direct GWNET LOM and hold.	
For inop ALS, increase S-LOC 25 Cat C/D visibility to 1 3/8 SM.								
ATIS <b>132.275</b>	ATLANTA APP CON <b>126.975 239.275</b>	GWINNETT TOWER * <b>124.1</b> (CTAF)	GND CON <b>121.8</b>	CLNC DEL <b>121.8</b>	CLNC DEL <b>134.0</b> (When twr closed)	UNICOM <b>123.05</b>		



CATEGORY	A	B	C	D
S-ILS 25	1238-1/2		200 (200-1/2)	
S-LOC 25	1500-1/2	462 (500-1/2)	1500-1	462 (500-1)
<input checked="" type="checkbox"/> CIRCLING	1640-1	578 (600-1)	1680-1 3/4 618 (700-1 3/4)	1700-2 638 (700-2)

SE-4, 15 JUL 2021 to 12 AUG 2021

SE-4, 15 JUL 2021 to 12 AUG 2021