

LOC-D
GILLESPIE FLD (SEE)

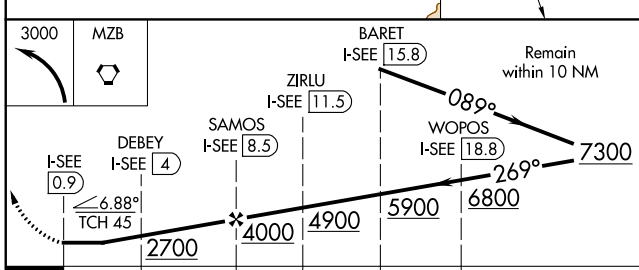
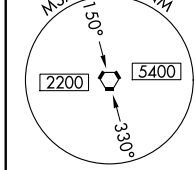
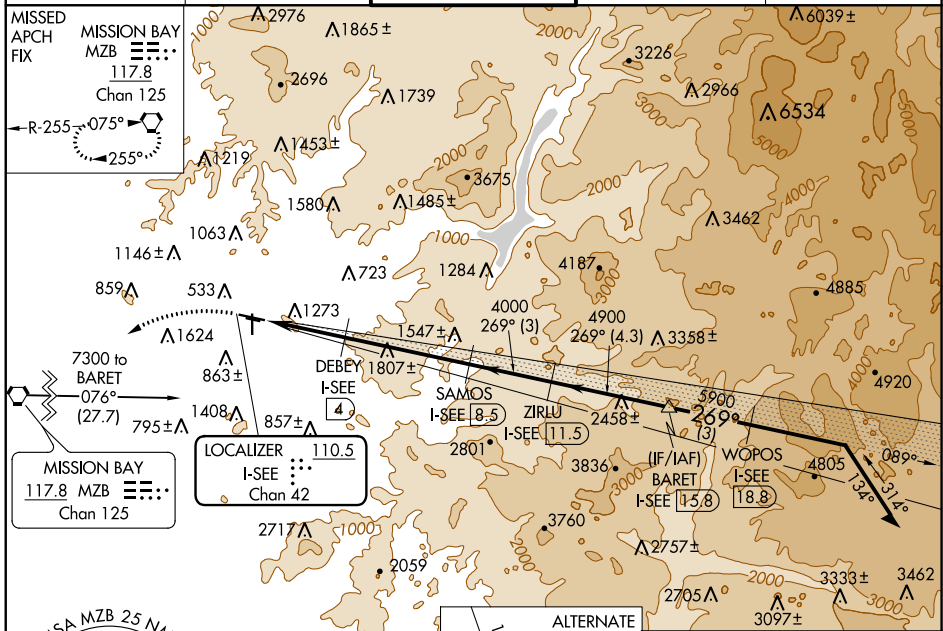
| | | |
|---|------------------------|---|
| LOC/DME I-SEE 110.5 Chan 42 | APP CRS 269° | Rwy Idg TDZE Apt Elev N/A N/A 388 |
|---|------------------------|---|

DME required.

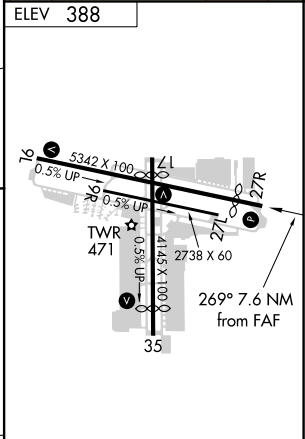
When local altimeter setting not received, use Miramar MCAS altimeter setting and increase all MDA 40 feet. Circling NA northeast of Rwy 27R-17. Circling Rwy 27R, 35 NA at night.

MISSED APPROACH: Climbing left turn to 3000 direct to MZB VORTAC and hold.

| | | | | |
|-----------------------|--|--|-------------------------|--------------------------|
| ATIS 125.45 | SOCAL APP CON 124.35 279.625 | GILLESPIE TOWER* 120.7 (CTAF) 257.8 | GND CON 121.7 | CLNC DEL 125.1 |
|-----------------------|--|--|-------------------------|--------------------------|



| CATEGORY | A | B | C | D |
|----------|---------------------------|---------------------------|--------|---------------|
| CIRCLING | 1500-1¼ 1112 (1200-1¼) | 1500-1½ 1112 (1200-1½) | 1940-3 | 1552 (1600-3) |



MIRL Rwy 9L-27R and 17-35
REIL Rwy 27R

SW-3, 15 JUL 2021 to 12 AUG 2021

SW-3, 15 JUL 2021 to 12 AUG 2021