

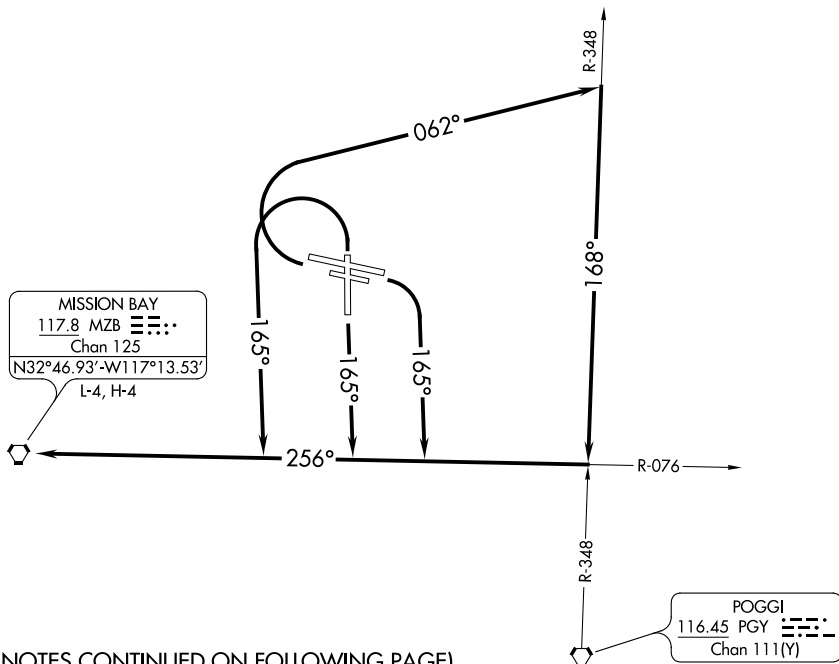
# MISSION BAY TWO DEPARTURE (OBSTACLE)

GILLESPIE FLD (S<sup>E</sup>E)  
SAN DIEGO/EL CAJON, CALIFORNIA

## TAKEOFF MINIMUMS

- Rwy 9L: 900-2¾ with minimum climb of 400' per NM to 3600, or 4400-3 for VCOA.
- Rwy 9R: 900-2¾ with minimum climb of 405' per NM to 3600, or 4400-3 for VCOA.
- Rwy 17: Standard with minimum climb of 440' per NM to 1800, or 4400-3 for VCOA.
- Rwys 27L/R: Standard with minimum climb of 500' per NM to 2000, or 4400-3 for VCOA.
- Rwy 35: Standard with minimum climb of 360' per NM to 1900, or 4400-3 for VCOA.

GILLESPIE TOWER \*  
120.7 257.8  
SOCAL DEP CON  
124.35 279.625



(NOTES CONTINUED ON FOLLOWING PAGE)

NOTE: Chart not to scale.

## DEPARTURE ROUTE DESCRIPTION

TAKEOFF RUNWAYS 9L/R: Climbing right turn on heading 165°, thence . . . .

TAKEOFF RUNWAY 17: Climb on heading 165°, thence . . . .

TAKEOFF RUNWAYS 27L/R: Climbing right turn on heading 062° and on PGY R-348, thence . . . .

TAKEOFF RUNWAY 35: Climbing left turn on heading 165°, thence . . . .

. . . . on MZB R-076 to MZB VORTAC.

ALL RUNWAYS: Obtain ATC approval for VCOA when requesting IFR clearance.

Climb in visual conditions to cross Gillespie Fld at or above 4600 before proceeding on assigned route of flight.