

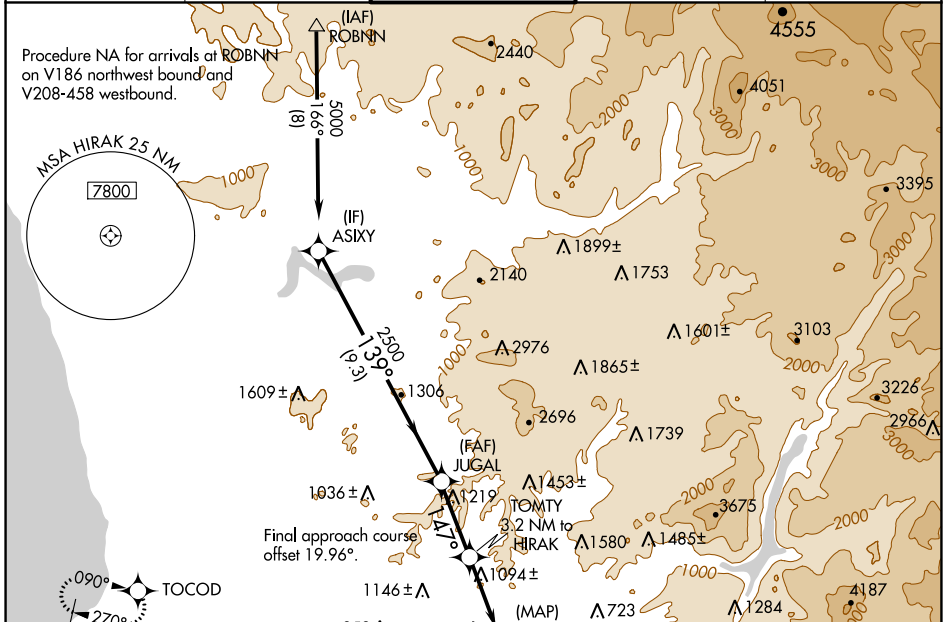
WAAS CH 86928 W17A	APP CRS 147°	Rwy Idg TDZE Apt Elev	3695 379 388
--	------------------------	-----------------------------	---

RNAV (GPS) RWY 17

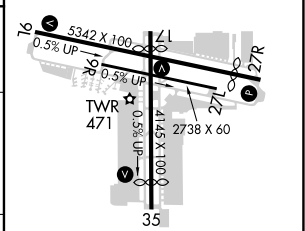
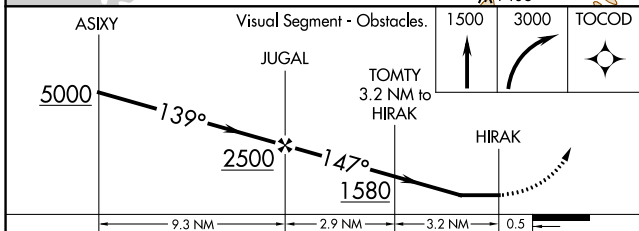
GILLESPIE FLD (SEE)

RNP APCH.	MISSED APPROACH: Climb to 1500 then climbing right turn to 3000 direct TOCOD and hold.
<p>⚠ Circling NA northeast of Rwy 17 and 27R. When local altimeter setting not received, use Miramar MCAS altimeter setting and increase all MDA 40 feet. Rwy 17 helicopter visibility reduction below 1 SM NA. Circling Rwy 27R, 35 NA at night.</p>	

ATIS 125.45	SOCAL APP CON 124.35 279.625	GILLESPIE TOWER* 120.7 (CTAF) 257.8	GND CON 121.7	CLNC DEL 125.1
-----------------------	--	---	-------------------------	--------------------------



ELEV 388	TDZE 379
----------	----------



CATEGORY	A	B	C	D
LP MDA	1360-1¼ 981 (1000-1¼)	1360-1½ 981 (1000-1½)	1360-3	981 (1000-3)
LNAV MDA	1380-1¼ 1001 (1000-1¼)	1380-1½ 1001 (1000-1½)	1380-3	1001 (1000-3)
CIRCLING	1440-1¼ 1052 (1100-1¼)	1440-1½ 1052 (1100-1½)	1440-3	1052 (1100-3)

MIRL Rwy 9L-27R and 17-35
REIL Rwy 27R

SW-3, 15 JUL 2021 to 12 AUG 2021

SW-3, 15 JUL 2021 to 12 AUG 2021