

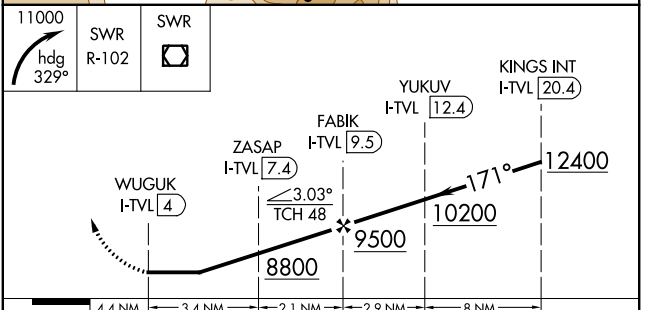
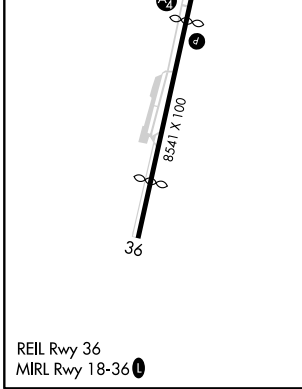
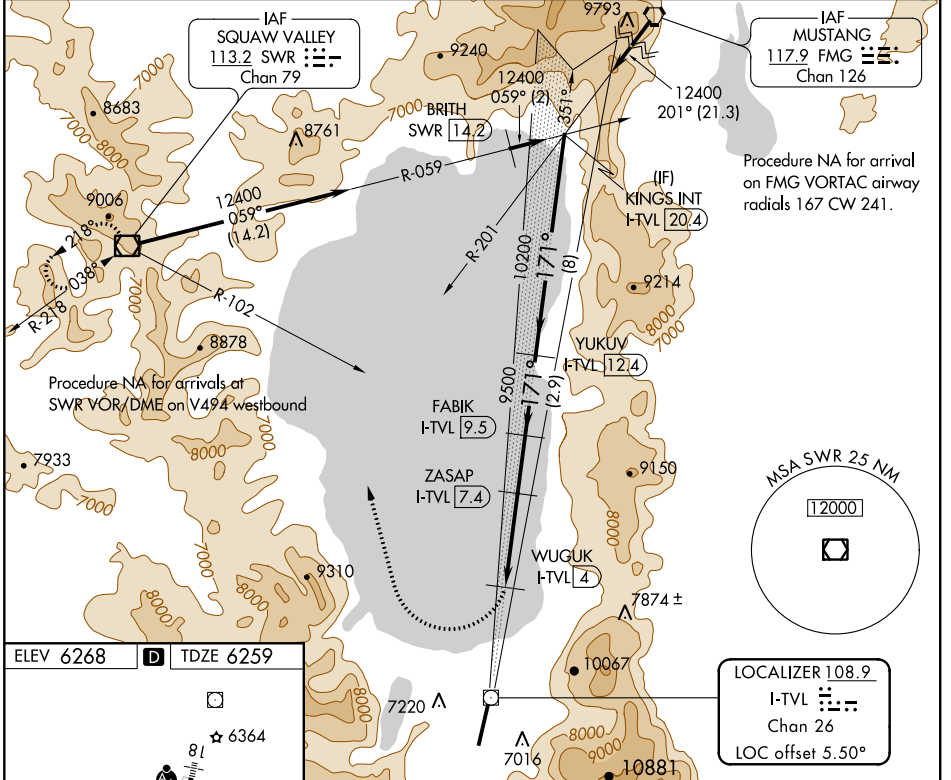
LOC/DME I-TVL 108.9 Chan 26	APP CRS 171°	Rwy Idg TDZE 7017 6259 Apt Elev 6268
--	------------------------	--

LDA RWY 18

LAKE TAHOE (TVL)

DME required.	MALSF	MISSED APPROACH: Climbing right turn to 11000 on heading 329° and SWR VOR/DME R-102 to SWR VOR/DME and hold.
<p>NA Rwy 18 helicopter visibility reduction below 3/4 SM NA. When local altimeter setting not received, procedure NA.</p> <p>-13°C</p>		

ASOS 124.725	OAKLAND CENTER 127.95 316.1	CLNC DEL 134.3	CTAF 122.85
------------------------	---------------------------------------	--------------------------	-----------------------



11000	SWR R-102	SWR	YUKUV I-TVL 12.4	KINGS INT I-TVL 20.4
<p>WUGUK I-TVL 4 ZASAP I-TVL 7.4 FABIK I-TVL 9.5 12400</p>				
<p>8800 9500 10200</p>				
4.4 NM	3.4 NM	2.1 NM	2.9 NM	8 NM
CATEGORY	A	B	C	D
S-18	7160-5 901 (900-5)			8520-5 2261 (2300-5)

SW-2, 15 JUL 2021 to 12 AUG 2021

SW-2, 15 JUL 2021 to 12 AUG 2021