

(IYK2.LHS) 19227

AL-5417 (FAA)

INYOKERN (IYK)
INYOKERN, CALIFORNIA

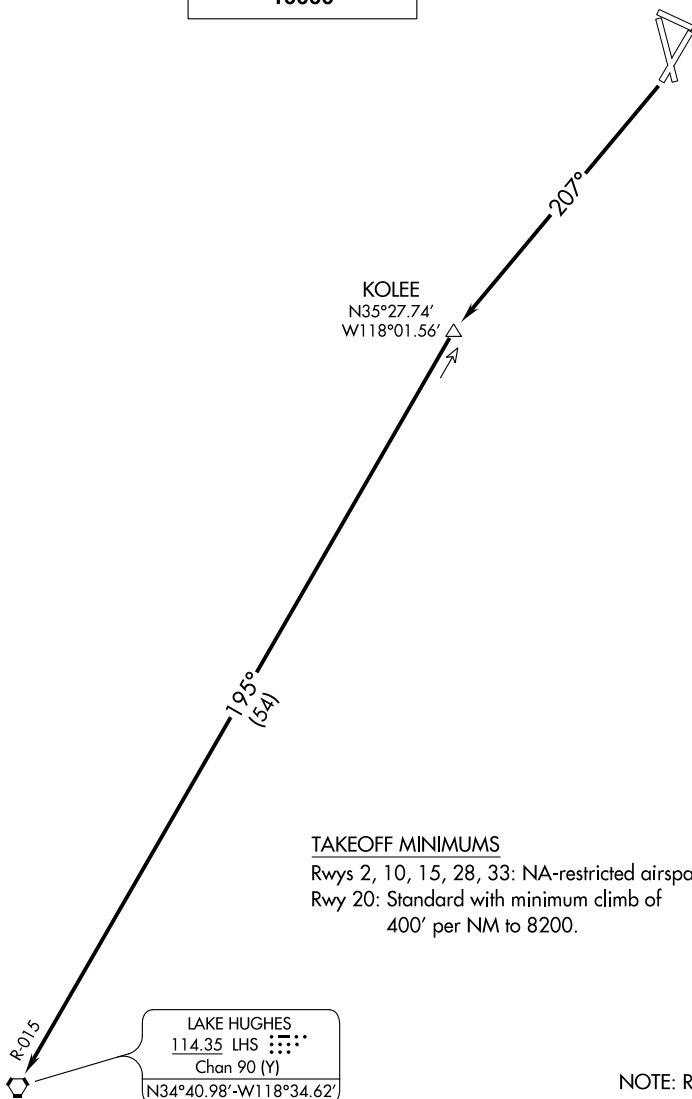
INYOKERN TWO DEPARTURE

JOSHUA DEP CON
133.65 348.7

TOP ALTITUDE:
10000

SW-3, 15 JUL 2021 to 12 AUG 2021

SW-3, 15 JUL 2021 to 12 AUG 2021



KOLEE
N35°27.74'
W118°01.56'

195°
(54)

207°

R-015

LAKE HUGHES
114.35 LHS
Chan 90 (Y)
N34°40.98'-W118°34.62'
L-3-4-7

TAKEOFF MINIMUMS

Rwys 2, 10, 15, 28, 33: NA-restricted airspace/terrain.

Rwy 20: Standard with minimum climb of
400' per NM to 8200.

NOTE: RADAR required.

NOTE: Chart not to scale.



DEPARTURE ROUTE DESCRIPTION

TAKEOFF RWY 20: Climb to 10000 on heading 207° and LHS VORTAC R-015 to LHS VORTAC, then proceed on course.

INYOKERN TWO DEPARTURE

(IYK2.LHS) 15SEP16

INYOKERN, CALIFORNIA
INYOKERN (IYK)