

RNAV (GPS) RWY 2 INYOKERN (IYK)

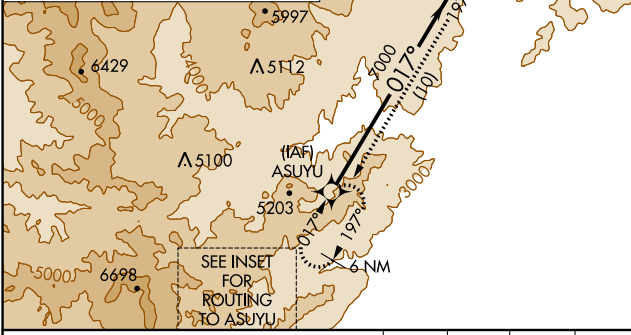
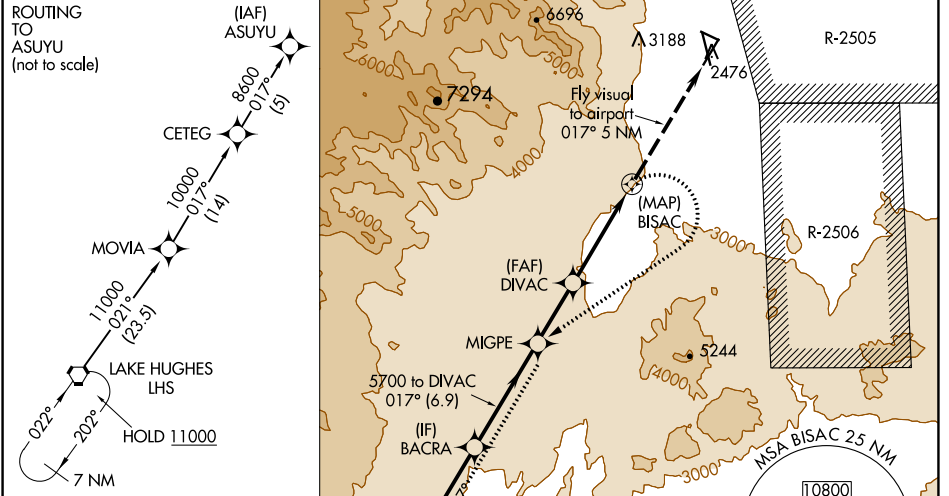
APP CRS 017°	Rwy Idg 6275
	TDZE 2442
	Apt Elev 2457

RNP APCH.

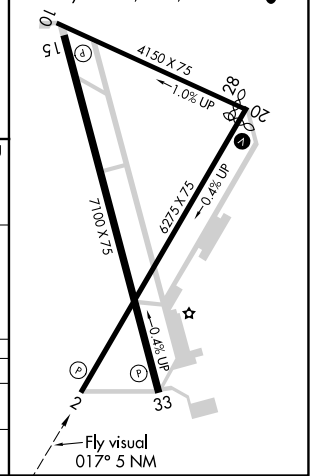
NA Circling Rwy 10, 33 NA at night. Circling NA east of Rwy 15-33. Circling NA at night west of Rwy 2 and 15. Except for operators with approved weather reporting service, use Mojave altimeter setting, if not available, procedure NA.

MISSED APPROACH: (Do not exceed 165K until SW bound) Climbing right turn to 8600 direct MIGPE then left turn on track 197° to ASUYU and hold.

MHV AWOS-3 132.225	JOSHUA APP CON 133.65 348.7	AUNICOM 122.8 (CTAF) 0
------------------------------	---------------------------------------	----------------------------------



ELEV 2457	TDZE 2442
MRL Rwy 15-33, 2-20, and 10-28 0	



ASUYU	BACRA	DIVAC	BISAC	ASUYU
8600	7000	5700	5244	8600
017°	017°	017°	017°	197° tr
10 NM	6.9 NM	4.1 NM	5 NM	

CATEGORY	A	B	C	D
RNAV MDA	4200-3 1758 (1800-3)			
CIRCLING	4200-3 1743 (1800-3)	4780-3 2323 (2400-3)	5640-3 3183 (3200-3)	

SW-3, 15 JUL 2021 to 12 AUG 2021

SW-3, 15 JUL 2021 to 12 AUG 2021