

LOC I-HYS 111.5	APP CRS 339°	Rwy Idg 6501
		TDZE 1994
		Apt Elev 1999

ILS or LOC RWY 34

HAYS RGNL (HYS)

NA
ADF required. When local altimeter setting not received, use Russell altimeter setting and increase all DA 69 feet and all MDA 80 feet, increase S-LOC Cat C visibility ¼ mile. For inoperative MALSR when using Russell altimeter setting, increase S-ILS all Cats visibility to 1.

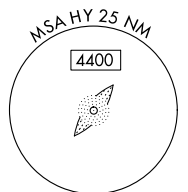
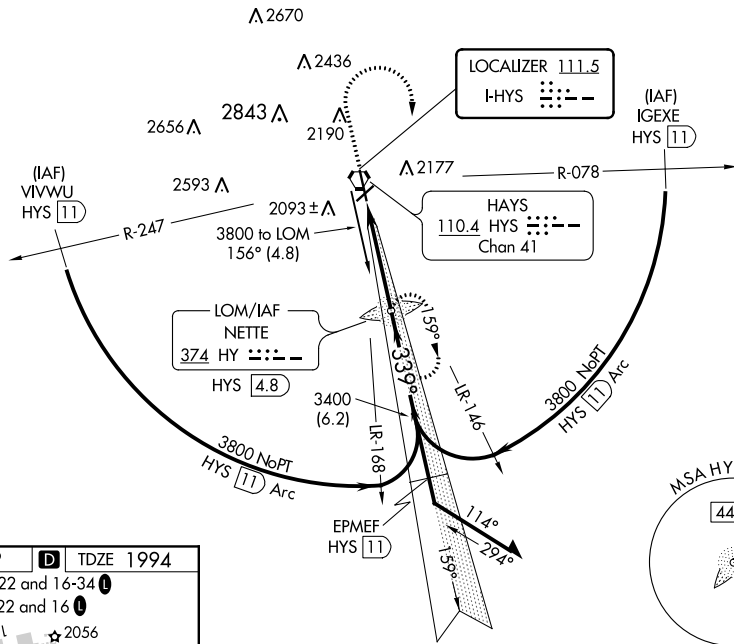
MALSR
 MISSED APPROACH: Climb to 2600 then climbing right turn to 3800 direct NETTE LOM/HYS 4.8 DME and hold.

AWOS-3PT
125,525

KANSAS CITY CENTER
124.4 322.4

UNICOM
122.8 (CTAF)

ADF or DME REQUIRED



NC-2, 15 JUL 2021 to 12 AUG 2021

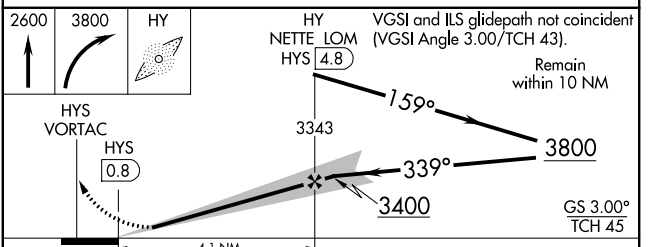
NC-2, 15 JUL 2021 to 12 AUG 2021

ELEV 1999 **D** TDZE 1994
MIRL Rwy's 4-22 and 16-34 **(I)**
REIL Rwy's 4, 22 and 16 **(I)**

91
4501 x 100
2056
34
4501 x 75
339° 4.1 NM from FAF

FAF to MAP 4.1 NM

Knots	60	90	120	150	180
Min:Sec	4:06	2:44	2:03	1:38	1:22



CATEGORY	A	B	C	D
S-ILS 34	2194-½ 200 (200-½)			
S-LOC 34	2340-½ 346 (400-½)			2340-¾ 346 (400-¾)
CIRCLING	2440-1 441 (500-1)	2480-1 481 (500-1)	2480-1½ 481 (500-1½)	2560-2 561 (600-2)