

WAAS CH 99619 W16A	APP CRS 159°	Rwy Idg TDZE Apt Elev	6501 1999 1999
--	------------------------	-----------------------------	---

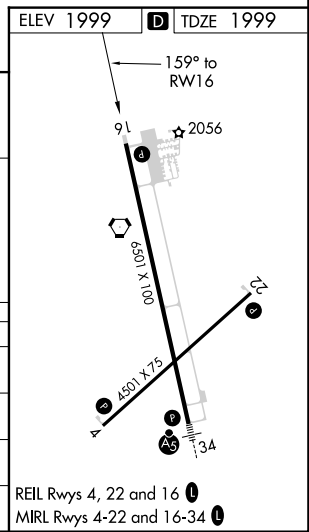
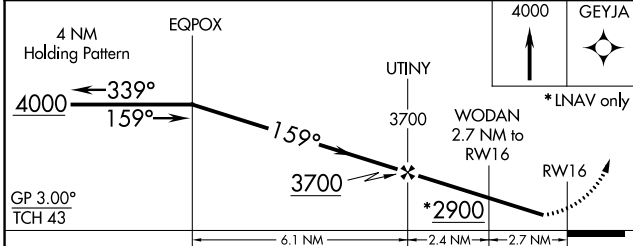
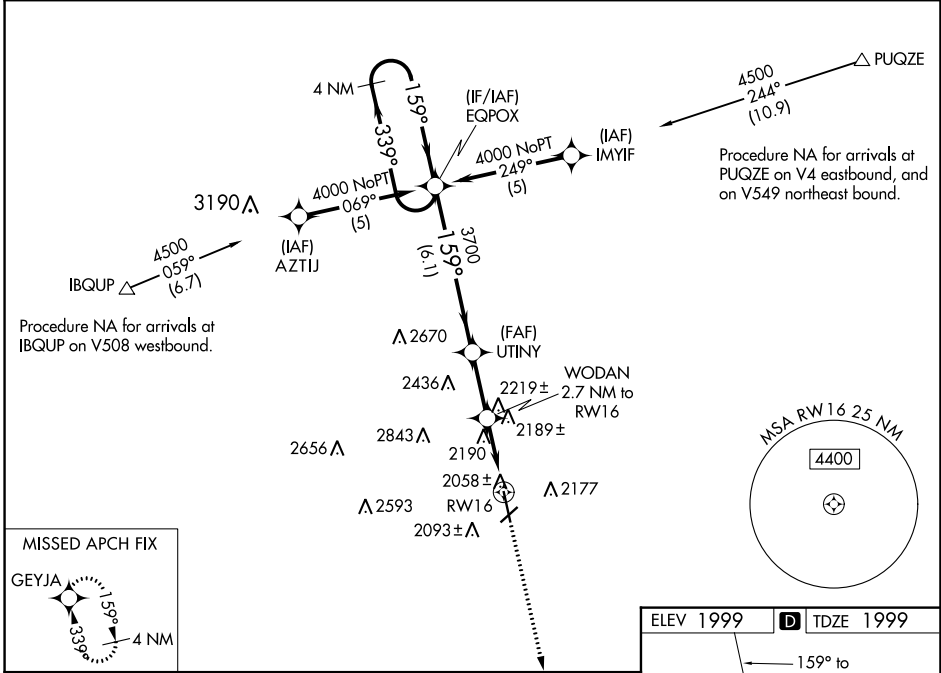
RNAV (GPS) RWY 16

HAYS RGNL (HYS)

⚠ For uncompensated Baro-VNAV systems, LNAV/VNAV NA below -18°C (0°F) or above 45°C (113°F). DME/DME RNP-0.3 NA. Visibility reduction by helicopters NA. When local altimeter setting not received, use Russell altimeter setting and increase LPV DA to 2318, LNAV/VNAV DA to 2445, and all MDA 80 feet, increase LNAV/VNAV all Cats visibility ½ mile and LNAV Cat C and D visibility ¼ mile. Baro-VNAV NA when using Russell altimeter setting.

MISSED APPROACH:
Climb to 4000 direct GEYJA and hold.

AWOS-3PT 125.525	KANSAS CITY CENTER 124.4 322.4	UNICOM 122.8 (CTAF) Ⓛ
----------------------------	--	--



CATEGORY	A	B	C	D
LPV DA		2249-1	250 (300-1)	
LNAV/VNAV DA		2308-1	309 (400-1)	
LNAV MDA	2440-1	441 (500-1)	2440-1¼ 441 (500-1¼)	2440-1½ 441 (500-1½)
CIRCLING	2440-1 441 (500-1)	2480-1 481 (500-1)	2480-1½ 481 (500-1½)	2560-2 561 (600-2)

NC-2, 15 JUL 2021 to 12 AUG 2021

NC-2, 15 JUL 2021 to 12 AUG 2021