

WAAS CH <b>50519</b> <b>W22A</b>	APP CRS <b>220°</b>	Rwy Idg TDZE Apt Elev	<b>4500</b> <b>1990</b> <b>1999</b>
--	------------------------	-----------------------------	---

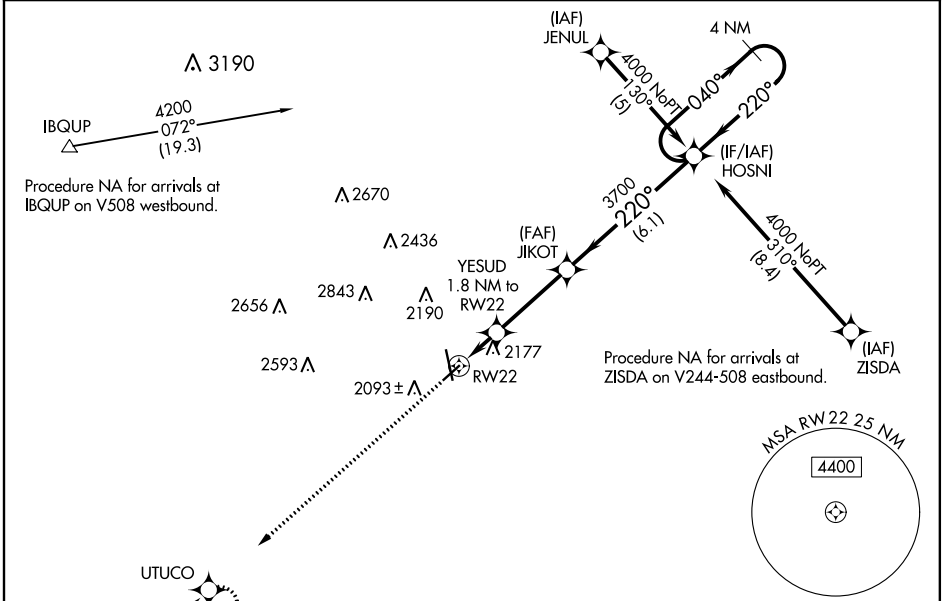
# RNAV (GPS) RWY 22

HAYS RGNL (HYS)

**⚠** For uncompensated Baro-VNAV systems, LNAV/VNAV NA below -18°C (0°F) or above 45°C (113°F). DME/DME RNP-0.3 NA. Visibility reduction by helicopters NA. When local altimeter setting not received, use Russell altimeter setting and increase all DA 69 feet and all MDA 80 feet, increase LPV and LNAV/VNAV all Cats visibility ¼ mile and LNAV Cat C and D visibility ½ mile. VDP and Baro-VNAV NA when using Russell altimeter setting.

**MISSED APPROACH:** Climb to 4000 direct UTUCO and hold.

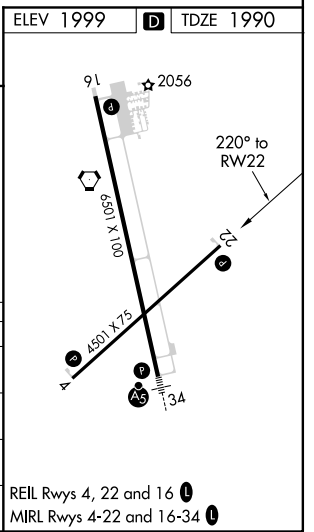
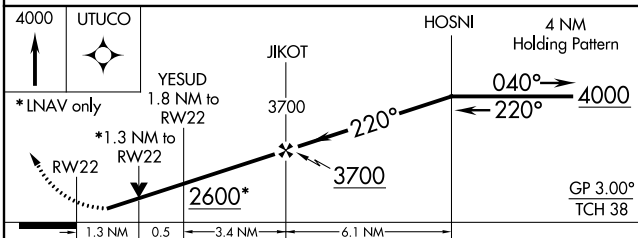
AWOS-3PT <b>125.525</b>	KANSAS CITY CENTER <b>124.4 322.4</b>	UNICOM <b>122.8 (CTAF) 1</b>
----------------------------	--	---------------------------------



NC-2, 15 JUL 2021 to 12 AUG 2021

NC-2, 15 JUL 2021 to 12 AUG 2021

ELEV 1999	<b>D</b> TDZE 1990
-----------	--------------------



CATEGORY	A	B	C	D
LPV DA	2240-1 250 (300-1)			
LNAV/VNAV DA	2476-1¾ 486 (500-1¾)			
LNAV MDA	2440-1 450 (500-1)	2440-1¼ 450 (500-1¼)	2440-1½ 450 (500-1½)	2440-1½ 450 (500-1½)
CIRCLING	2440-1 441 (500-1)	2480-1 481 (500-1)	2480-1½ 481 (500-1½)	2560-2 561 (600-2)

REIL Rws 4, 22 and 16 **1**  
MRL Rws 4-22 and 16-34 **1**