

WAAS CH <b>90519</b> <b>W04A</b>	APP CRS <b>040°</b>	Rwy Idg TDZE Apt Elev	<b>4500</b> <b>1990</b> <b>1999</b>
--	------------------------	-----------------------------	---

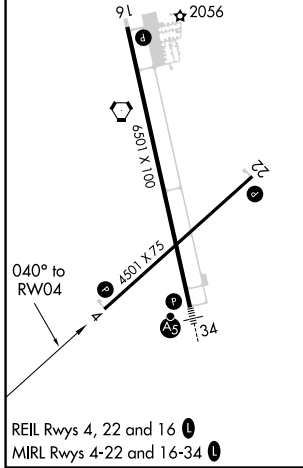
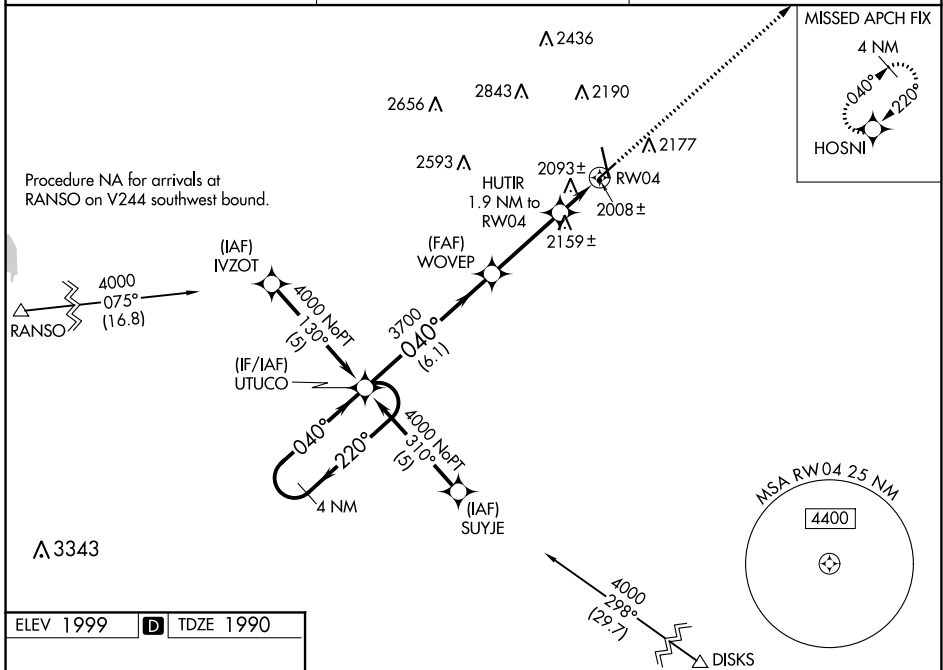
# RNAV (GPS) RWY 4

HAYS RGNL (HYS)

**⚠** For uncompensated Baro-VNAV systems, LNAV/VNAV NA below -18°C (0°F) or above 45°C (113°F). DME/DME RNP-0.3 NA. Visibility reduction by helicopters NA. When local altimeter setting not received, use Russell altimeter setting and increase all DA 69 feet and all MDA 80 feet, increase LPV and LNAV/VNAV all Cots visibility ¼ mile and LNAV Cat C visibility ¼ mile. Baro-VNAV NA when using Russell altimeter setting.

MISSED APPROACH:  
Climb to 4000 direct HOSNI and hold.

AWOS-3PT <b>125.525</b>	KANSAS CITY CENTER <b>124.4 322.4</b>	UNICOM <b>122.8 (CTAF) 1</b>
----------------------------	--	---------------------------------



ELEV 1999	<b>D</b>	TDZE 1990		
<p>4 NM Holding Pattern</p> <p>UTUCO</p> <p>4000 ← 220°</p> <p>040° →</p> <p>WOVEP</p> <p>3700</p> <p>HUTIR 1.9 NM to RW04</p> <p>*LNAV only</p> <p>RW04</p> <p>GP 3.00°</p> <p>TCH 40</p> <p>*2620</p> <p>6.1 NM</p> <p>3.3 NM</p> <p>1.9 NM</p>				
CATEGORY	A	B	C	D
LPV DA	2240-1		250 (300-1)	
LNAV/VNAV DA	2278-1		288 (300-1)	
LNAV MDA	2420-1	430 (500-1)	2420-1½ 430 (500-1½)	2420-1½ 430 (500-1½)
CIRCLING	2440-1 441 (500-1)	2480-1 481 (500-1)	2480-1½ 481 (500-1½)	2560-2 561 (600-2)

NC-2, 15 JUL 2021 to 12 AUG 2021

NC-2, 15 JUL 2021 to 12 AUG 2021