


VORTAC HYS <b>110.4</b> Chan 41	APP CRS <b>332°</b>	Rwy Idg <b>6501</b> TDZE <b>1994</b> Apt Elev <b>1999</b>
---------------------------------------	------------------------	---

# VOR/DME RWY 34

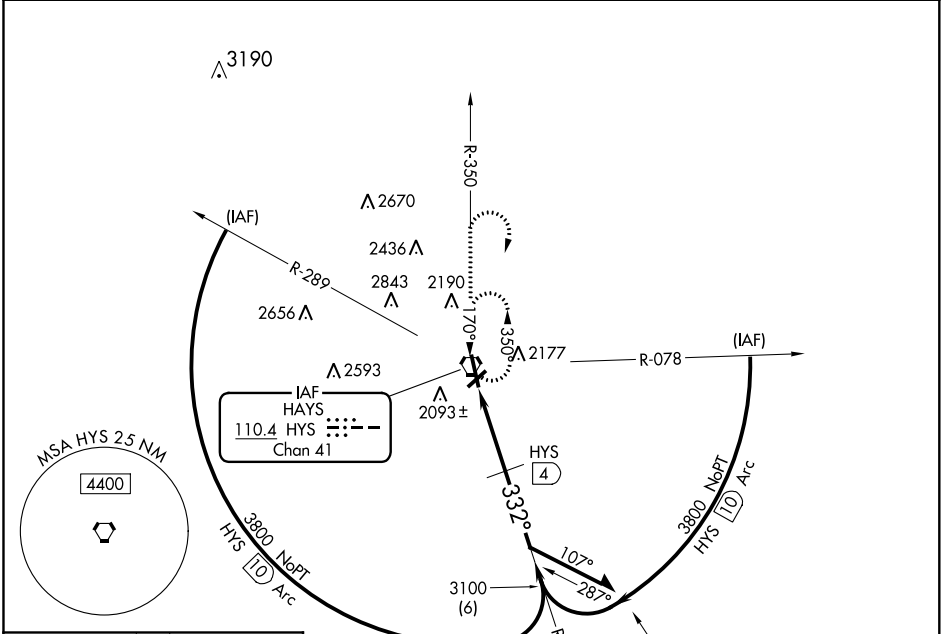
HAYS RGNL (HYS)

When local altimeter setting not received, use Russell altimeter setting and increase all MDA 80 feet, increase S-34 Cat C visibility 1/4 mile. VDP NA with Russell altimeter setting. For inop MALSRS, increase S-34 Cat D visibility to 1/4 mile.

MALSRS 

MISSED APPROACH: Climb to 3800 via HYS R-350 then climbing right turn to 3900 direct HYS VORTAC and hold.


AWOS-3PT <b>125.525</b>	KANSAS CITY CENTER <b>124.4 322.4</b>	UNICOM <b>122.8 (CTAF) 0</b>
----------------------------	--	---------------------------------




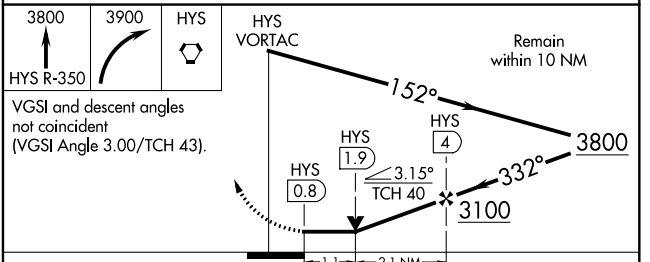
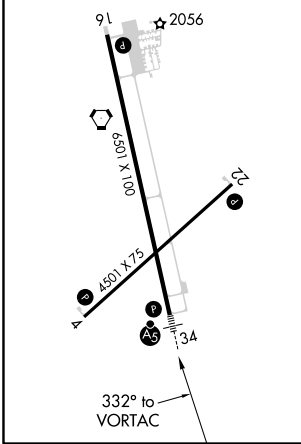
NC-2, 15 JUL 2021 to 12 AUG 2021

NC-2, 15 JUL 2021 to 12 AUG 2021

ELEV 1999	<b>D</b>	TDZE 1994
-----------	----------	-----------

MIRL Rwy 4-22 and 16-34 

REIL Rwy 4, 22 and 16 



CATEGORY	A	B	C	D
S-34	2380-1/2 386 (400-1/2)			2380-1 386 (400-1)
CIRCLING	2440-1 441 (500-1)	2480-1 481 (500-1)	2480-1 1/2 481 (500-1 1/2)	2560-2 561 (600-2)