

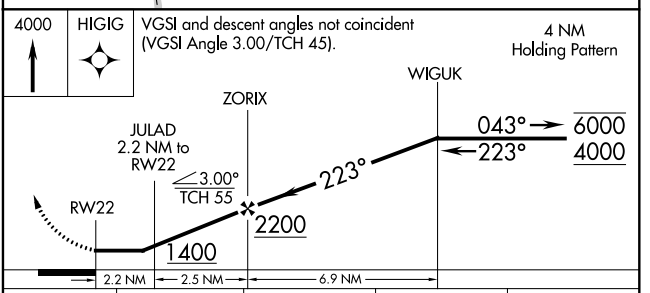
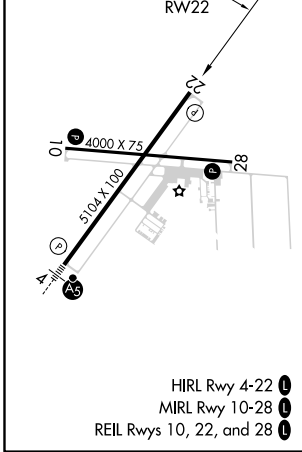
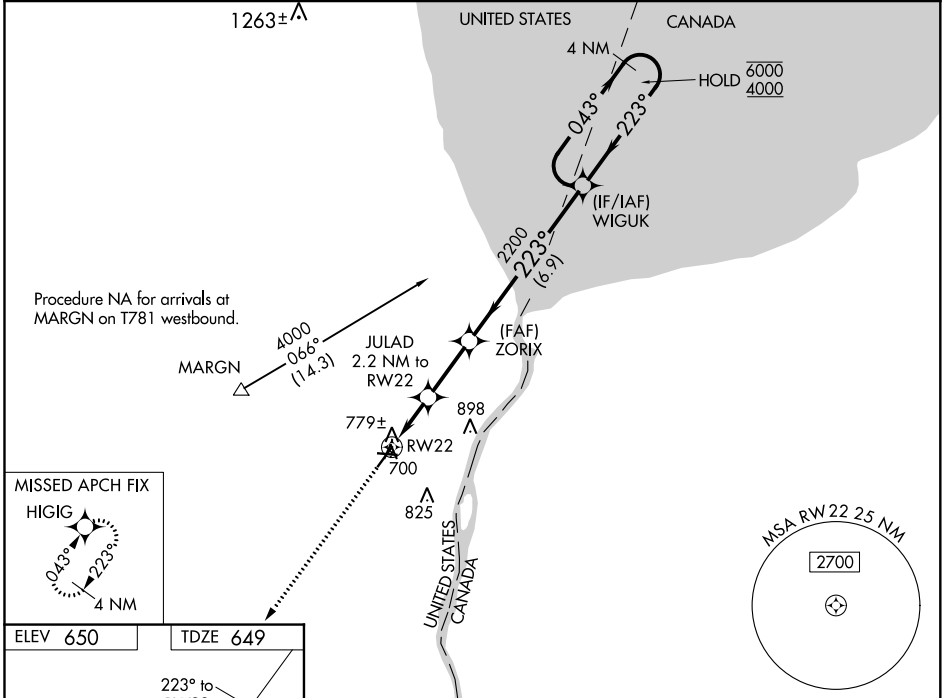
WAAS CH 97723 W22A	APP CRS 223°	Rwy ldg 5104 TDZE 649 Apt Elev 650
--	------------------------	---

RNAV (GPS) RWY 22

ST CLAIR COUNTY INTL (PHN)

RNP APCH.	MISSED APPROACH: Climb to 4000 direct HIGIG and hold, continue climb-in-hold to 4000.
<p>▽ Rwy 22 helicopter visibility reduction below 1 SM NA.</p> <p>▲ Straight-in Rwy 22 NA at night, Circling Rwy 10, 22, 28 NA at night.</p>	

AWOS-3 118.375	SELFUDGE APP CON ★ 119.6 391.9	UNICOM 123.05 (CTAF) 0
--------------------------	--	----------------------------------



CATEGORY	A	B	C	D
LP MDA	1020-1 371 (400-1)			
LP MDA	1040-1 391 (400-1)	1040-1 371 (400-1)		391 (400-1 1/8)
CIRCLING	1160-1 510 (600-1)	1260-1 3/4 610 (700-1 3/4)	1260-2 610 (700-2)	

EC-1, 15 JUL 2021 to 12 AUG 2021

EC-1, 15 JUL 2021 to 12 AUG 2021