

WAAS CH 53523 W04A	APP CRS 043°	Rwy Idg TDZE Apt Elev	5104 647 650
--	------------------------	-----------------------------	---


RNAV (GPS) RWY 4

ST CLAIR COUNTY INTL (PHN)

RNP APCH.

⚠ Circling Rwy 10, 22, 28 NA at night. For uncompensated Baro-VNAV systems, LNAV/VNAV NA below -16°C or above 54°C. For inoperative ALS, increase LNAV/VNAV all Cats visibility to 3/8 mile and LNAV Cat C/D visibility to 1 SM.

MALS

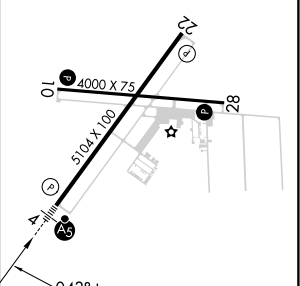
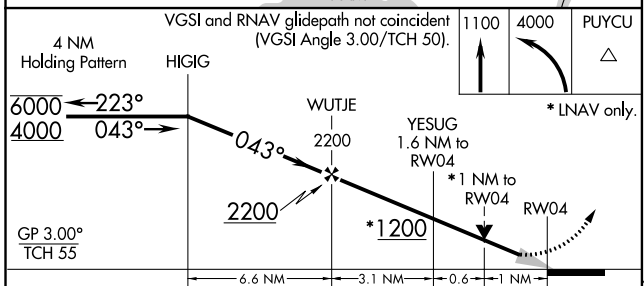
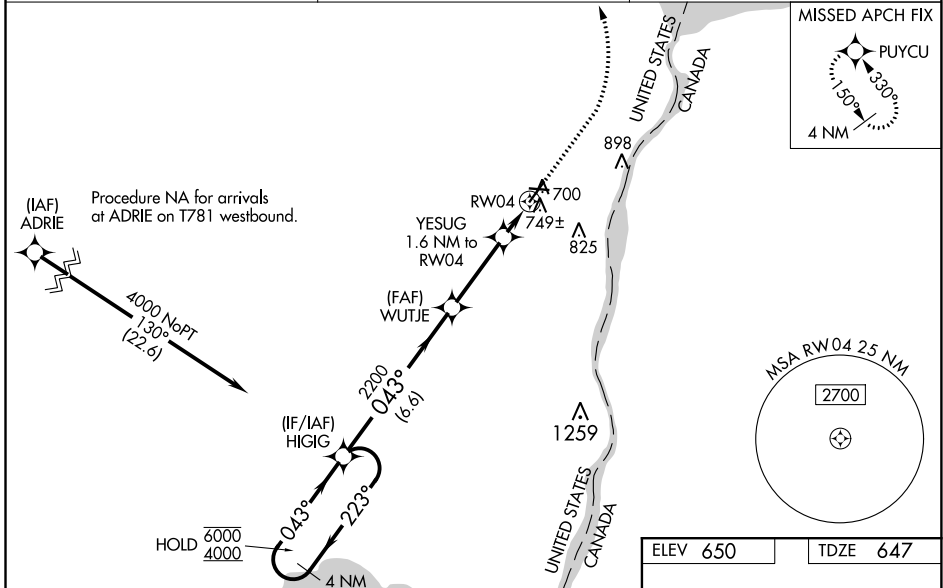


MISSED APPROACH:
Climb to 1100 then climbing left turn to 4000 direct PUYCU and hold, continue climb-in-hold to 4000.

AWOS-3
118.375

SELFRIDGE APP CON *
119.6 391.9

UNICOM
123.05 (CTAF)



CATEGORY	A	B	C	D
LPV DA	847-1/2		200 (200-1/2)	
LNAV/VNAV DA	930-1/2		283 (300-1/2)	
LNAV MDA	1000-1/2	353 (400-1/2)	1000-5/8	353 (400-5/8)
C CIRCLING	1160-1	510 (600-1)	1260-1 3/4 610 (700-1 3/4)	1260-2 610 (700-2)

ELEV 650 TDZE 647

HIRL Rwy 4-22 **Ⓛ**
MIRL Rwy 10-28 **Ⓛ**
REIL Rws 10, 22, and 28 **Ⓛ**

EC-1, 15 JUL 2021 to 12 AUG 2021

EC-1, 15 JUL 2021 to 12 AUG 2021