

LOC/DME I-GVL 110.55 Chan 42 (Y)	APP CRS 044°	Rwy Idg 5370 TDZE 1275 Apt Elev 1277
---	------------------------	---

ILS or LOC RWY 5

LEE GILMER MEML (GVL)

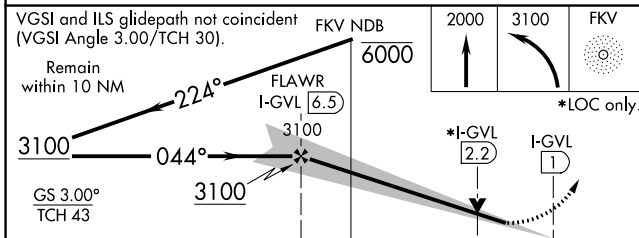
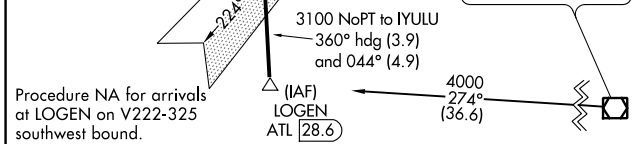
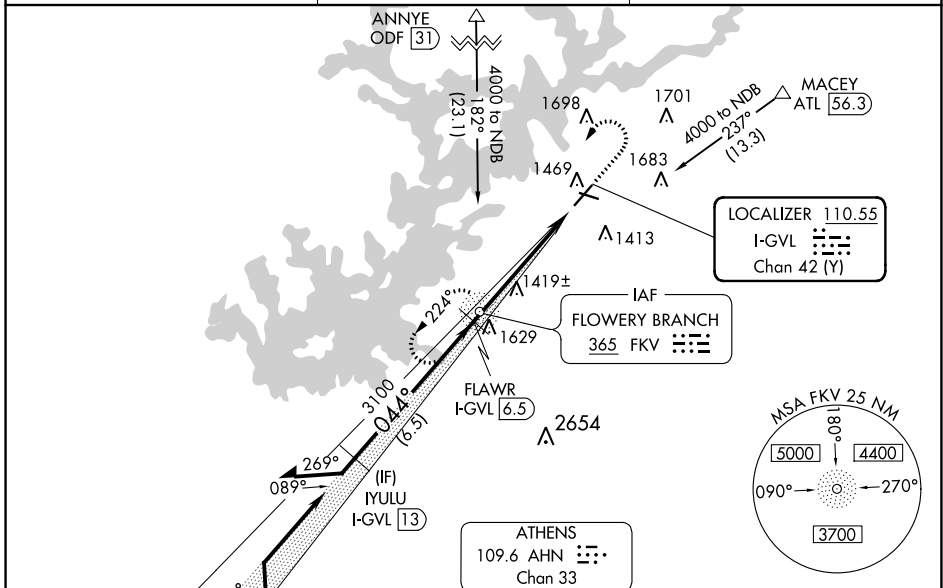
ADF or DME required for procedure entry.
ADF required.



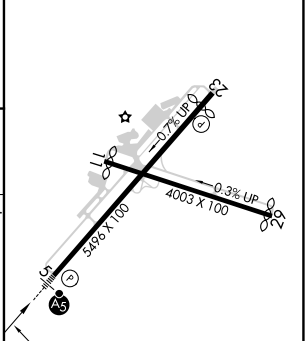
MISSED APPROACH:
Climb to 2000 then
climbing left turn to 3100
direct FKV NDB and hold.

⚠ Circling Rwy 11, 29 NA at night. Rwy 5 helicopter visibility reduction below 3/4 SM NA.
 ⚠ VDP NA when using Jefferson altimeter setting. When local altimeter setting not received,
 use Jefferson altimeter setting: increase all DA to 1556 feet and all visibilities 1/4 SM;
 increase all MDA 80 feet and S-LOC 5 Cat D visibility and Circling Cats C/D visibility 1/4 SM.

ASOS 126.475	ATLANTA APP CON* 132.475 291.1	UNICOM 123.075 (CTAF) 0
------------------------	--	-----------------------------------



ELEV 1277	D	TDZE 1275
-----------	---	-----------



CATEGORY	A	B	C	D	FAF to MAP 5.5 NM					
S-ILS 5		1475-3/4	200 (200-3/4)		Knots	60	90	120	150	180
S-LOC 5	1680-1	405 (500-1)	1680-1/4	405 (500-1/4)	Min:Sec	5:30	3:40	2:45	2:12	1:50
CIRCLING	1880-1 603 (700-1)	2000-1 723 (800-1)	2000-2 723 (800-2)	2060-2 1/2 783 (800-2 1/2)						

SE-4, 15 JUL 2021 to 12 AUG 2021

SE-4, 15 JUL 2021 to 12 AUG 2021