

NDB FKV 365	APP CRS 045°	Rwy Idg 5370
		TDZE 1275
		Apt Elev 1277

NDB RWY 5

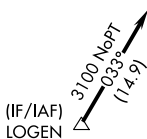
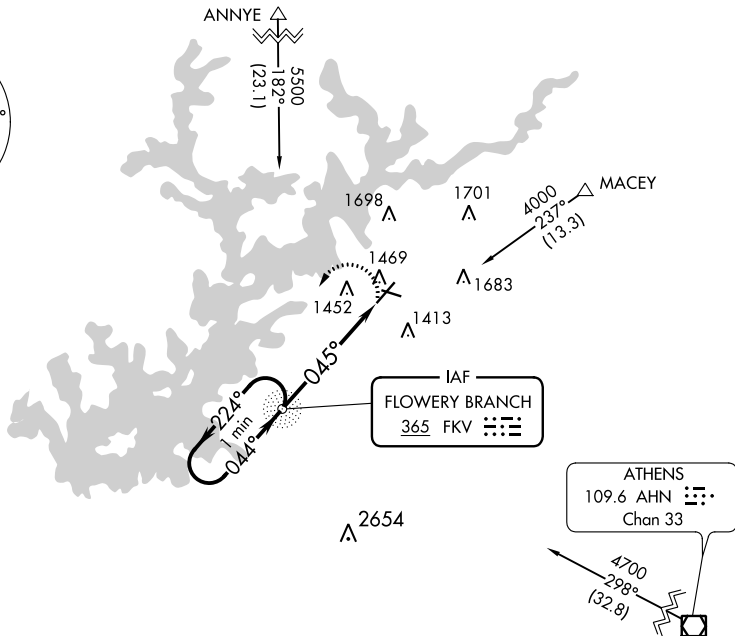
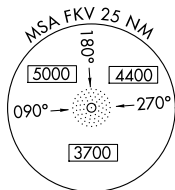
LEE GILMER MEML (GVL)

⚠ When local altimeter setting not received, use Jefferson altimeter setting and increase all MDA 80 feet, increase S-5 Cats C/D and Circling Cat C/D visibility 1/4 SM. Rwy 5 helicopter visibility reduction below 3/4 SM NA. Circling Rwy 11, 29 NA at night.

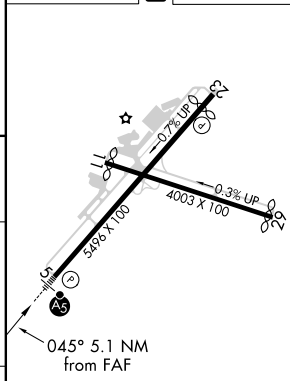
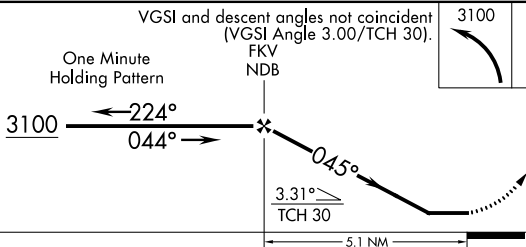


MISSED APPROACH:
Climbing left turn to 3100 direct FKV NDB and hold.

ASOS 126.475	ATLANTA APP CON* 132.475 291.1	UNICOM 123.075 (CTAF)
------------------------	--	---------------------------------



ELEV 1277	TDZE 1275
-----------	-----------



CATEGORY	A	B	C	D
S-5	1820-1	545 (600-1)	1820-1½ 545 (600-1½)	1820-1¾ 545 (600-1¾)
CIRCLING	1820-1 543 (600-1)	2000-1 723 (800-1)	2000-2 723 (800-2)	2040-2½ 763 (800-2½)

FAF to MAP 5.1 NM					
Knots	60	90	120	150	180
Min:Seq	5:06	3:24	2:33	2:02	1:42

SE-4, 15 JUL 2021 to 12 AUG 2021

SE-4, 15 JUL 2021 to 12 AUG 2021