

WAAS CH <b>77605</b> <b>W23A</b>	APP CRS <b>224°</b>	Rwy Idg TDZE Apt Elev	<b>5100</b> <b>1274</b> <b>1277</b>
--	------------------------	-----------------------------	---

# RNAV (GPS) RWY 23

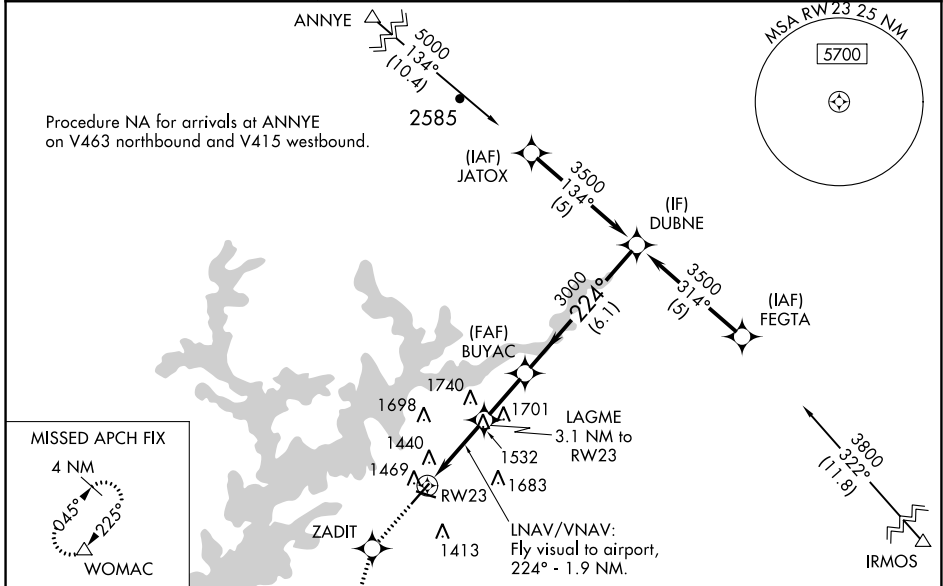
LEE GILMER MEML (GVL)

RNP APCH.

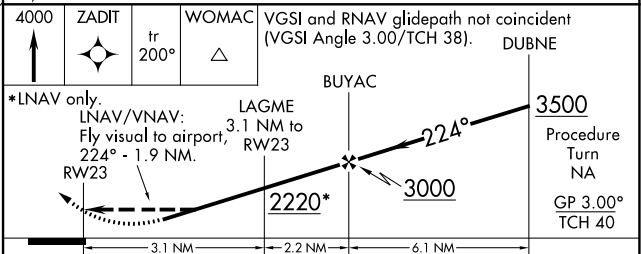
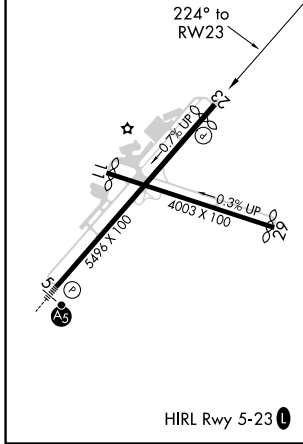
⚠ LNAV/VNAV NA when using Jefferson altimeter setting. Rwy 23 helicopter visibility reduction below  $\frac{3}{4}$  SM NA. For uncompensated Baro-VNAV systems, LNAV/VNAV NA below  $-17^{\circ}\text{C}$  or above  $46^{\circ}\text{C}$ . When local altimeter setting not received, use Jefferson altimeter setting; increase all DA/MDA 80 feet; increase LPV all Cats visibility  $\frac{1}{4}$  SM, and increase LNAV Cats C/D visibility and Circling Cats C/D visibility  $\frac{1}{4}$  SM. Circling Rwy 11, 29 NA at night.

⚠ MISSED APPROACH: Climb to 4000 direct ZADIT and on  $200^{\circ}$  track to WOMAC and hold, continue climb-in-hold to 4000.

ASOS <b>126.475</b>	ATLANTA APP CON* <b>132.475 291.1</b>	UNICOM <b>123.075 (CTAF)</b>
------------------------	--	---------------------------------



ELEV 1277	<b>D</b>	TDZE 1274
-----------	----------	-----------



CATEGORY	A	B	C	D
LPV DA	1722-1 $\frac{3}{4}$ 448 (500-1 $\frac{3}{4}$ )			
LNAV/VNAV DA	1884-2 610 (700-2)			
LNAV MDA	1840-1 566 (600-1)	1840-1 $\frac{1}{2}$ 566 (600-1 $\frac{1}{2}$ )		1840-1 $\frac{3}{4}$ 566 (600-1 $\frac{3}{4}$ )
CIRCLING	1880-1 603 (700-1)	2000-1 723 (800-1)	2000-2 723 (800-2)	2060-2 $\frac{1}{2}$ 783 (800-2 $\frac{1}{2}$ )

SE-4, 15 JUL 2021 to 12 AUG 2021

SE-4, 15 JUL 2021 to 12 AUG 2021