

WAAS CH 42605 W05A	APP CRS 044°	Rwy Idg TDZE Apt Elev	5370 1275 1277
---------------------------------	------------------------	-----------------------------	---

RNAV (GPS) RWY 5

LEE GILMER MEML (GVL)

RNP APCH.

For uncompensated Baro-VNAV systems, LNAV/VNAV NA below -17°C or above 46°C. When local altimeter setting not received, use Jefferson altimeter setting: increase all DA/MDA 80 feet; increase LPV and LNAV/VNAV all Cats visibilities ¼ SM, LNAV Cat D and Circling Cat C/D visibility ½ SM. Baro-VNAV and VDP NA when using Jefferson altimeter setting. Circling Rwy 11, 29 NA at night.

MALSR

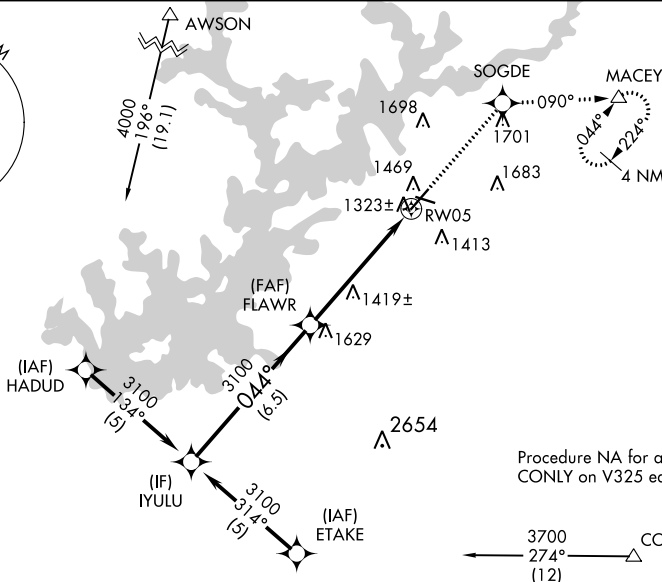
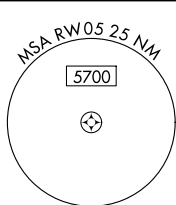


MISSED APPROACH:
Climb to 4000 direct SOGDE and on 090° track to MACEY and hold, continue climb-in-hold to 4000.

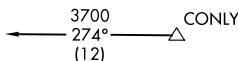
ASOS
126.475

ATLANTA APP CON*
132.475 291.1

UNICOM
123.075 (CTAF)

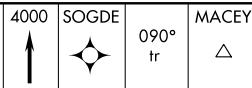


Procedure NA for arrivals at CONLY on V325 eastbound.

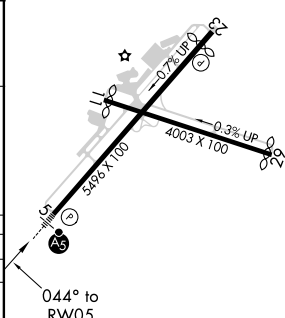
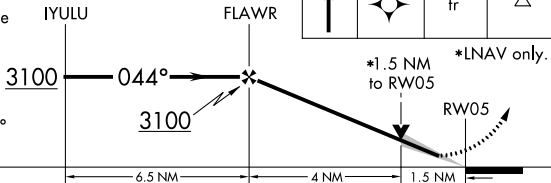


ELEV 1277 **D** TDZE 1275

VGSI and RNAV glidepath not coincident (VGSI Angle 3.00/TCH 30).



Procedure Turn NA



CATEGORY	A	B	C	D
LPV DA	1525-1		250 (300-1)	
LNAV/VNAV DA	1760-1¾		485 (500-1¾)	
LNAV MDA	1780-1	505 (600-1)	1780-1½	505 (600-1½)
CIRCLING	1880-1 603 (700-1)	2000-1 723 (800-1)	2000-2 723 (800-2)	2060-2½ 783 (800-2½)

HIRL Rwy 5-23 **D**

SE-4, 15 JUL 2021 to 12 AUG 2021

SE-4, 15 JUL 2021 to 12 AUG 2021