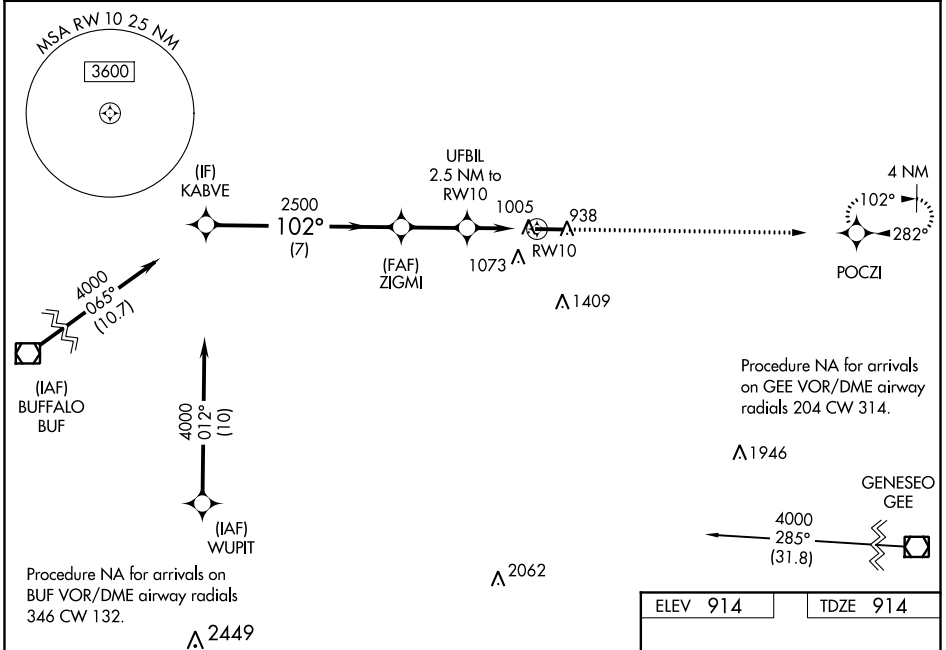


WAAS CH <b>82421</b> <b>W10A</b>	APP CRS <b>102°</b>	Rwy Idg TDZE Apt Elev	<b>5499</b> <b>914</b> <b>914</b>
--	------------------------	-----------------------------	---

# RNAV (GPS) RWY 10

GENESEE COUNTY (GVQ)

<p><b>NA</b> For uncompensated Baro-VNAV systems, LNAV/VNAV NA below -16°C (4°F) or above 38°C (100°F). DME/DME RNP-0.3 NA. When local altimeter setting not received, use Rochester altimeter setting and increase LPV DA all Cats to 1214, LNAV/VNAV DA all Cats to 1268, and all MDA 120 feet; increase LPV all Cats and Circling Cat D visibility ¼ mile, increase LNAV/VNAV all Cats and LNAV Cats C/D visibility ⅓ mile. Baro-VNAV and VDP NA when using Rochester altimeter setting.</p>			<p>MISSED APPROACH: Climb to 3000 direct POCZI and hold.</p>
AWOS-3PT <b>127.525</b>	ROCHESTER APP CON <b>123.7 322.3</b>	CLNC DEL <b>121.8</b>	UNICOM <b>122.7 (CTAF) 0</b>



KABVE		ZIGMI		UFBIL 2.5 NM to RW10		POCZI	
4000		2500		*1740		* LNAV only.	
GP 3.00° TCH 40		2500		*1 NM to RW10		102° to RW10	
7 NM		2.4 NM		1.5 NM		5499 X 100	
CATEGORY	A	B	C	D			
LPV DA		1114-¾	200 (200-¾)				
LNAV/VNAV DA		1168-⅞	254 (300-⅞)				
LNAV MDA		1260-1	346 (400-1)				
CIRCLING	1380-1	466 (500-1)	1380-1½ 466 (500-1½)	1480-2 566 (600-2)			

ELEV 914	TDZE 914
REIL Rwy 10 0	
HIRL Rwy 10-28 0	

NE-2, 15 JUL 2021 to 12 AUG 2021

NE-2, 15 JUL 2021 to 12 AUG 2021