

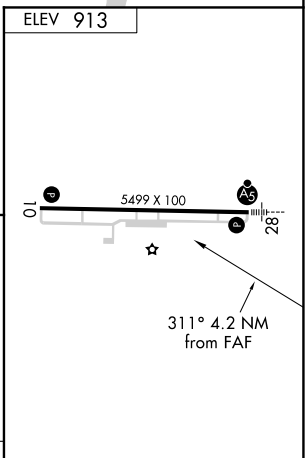
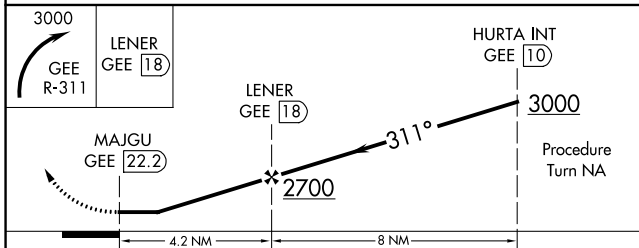
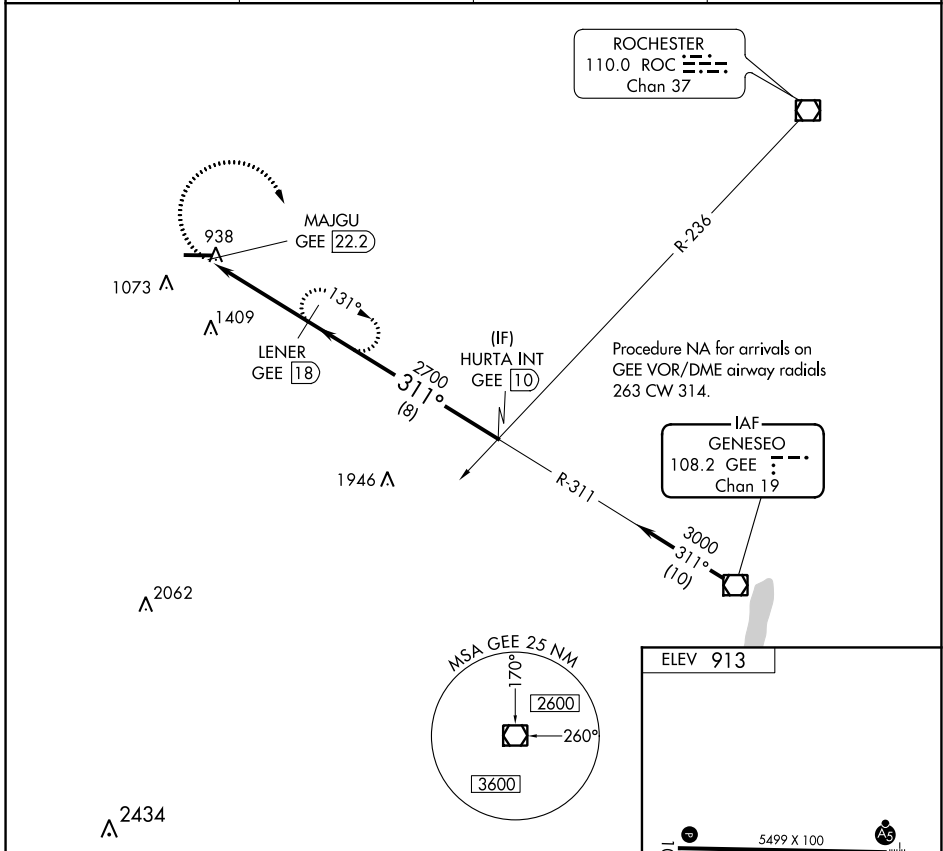
VOR/DME GEE <b>108.2</b> Chan <b>19</b>	APP CRS <b>311°</b>	Rwy Idg TDZE Apt Elev	<b>N/A</b> <b>N/A</b> <b>913</b>
-----------------------------------------------	------------------------	-----------------------------	----------------------------------------

**VOR/DME-A**  
GENESEE COUNTY (GVQ)

**NA** When local altimeter setting not received, use Rochester altimeter setting and increase all MDA 120 feet; increase Cat C and D visibility 1/2 mile.

MISSED APPROACH: Climbing right turn to 3000 via GEE VOR/DME R-311 to LENER/18 DME and hold, continue to climb-in-hold to 3000.

AWOS-3PT <b>127.525</b>	ROCHESTER APP CON <b>123.7 322.3</b>	CINC DEL <b>121.8</b>	UNICOM <b>122.7</b> (CTAF) <b>0</b>
----------------------------	-----------------------------------------	--------------------------	----------------------------------------



CATEGORY	A	B	C	D
CIRCLING	1620-1 707 (800-1)	1620-1 1/4 707 (800-1 1/4)	1620-2 707 (800-2)	1620-2 1/4 707 (800-2 1/4)

REIL Rwy 10 **0**

HIRL Rwy 10-28 **0**

NE-2, 15 JUL 2021 to 12 AUG 2021

NE-2, 15 JUL 2021 to 12 AUG 2021