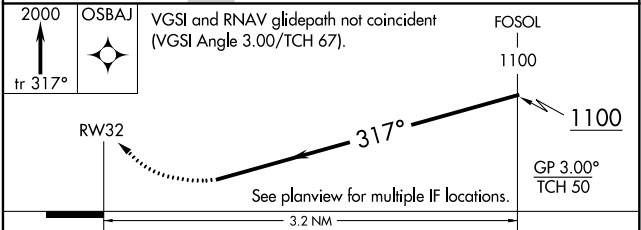
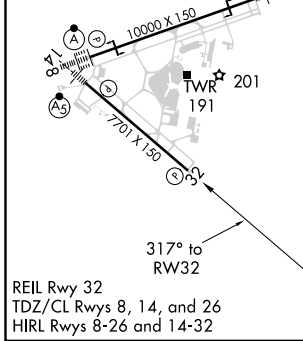
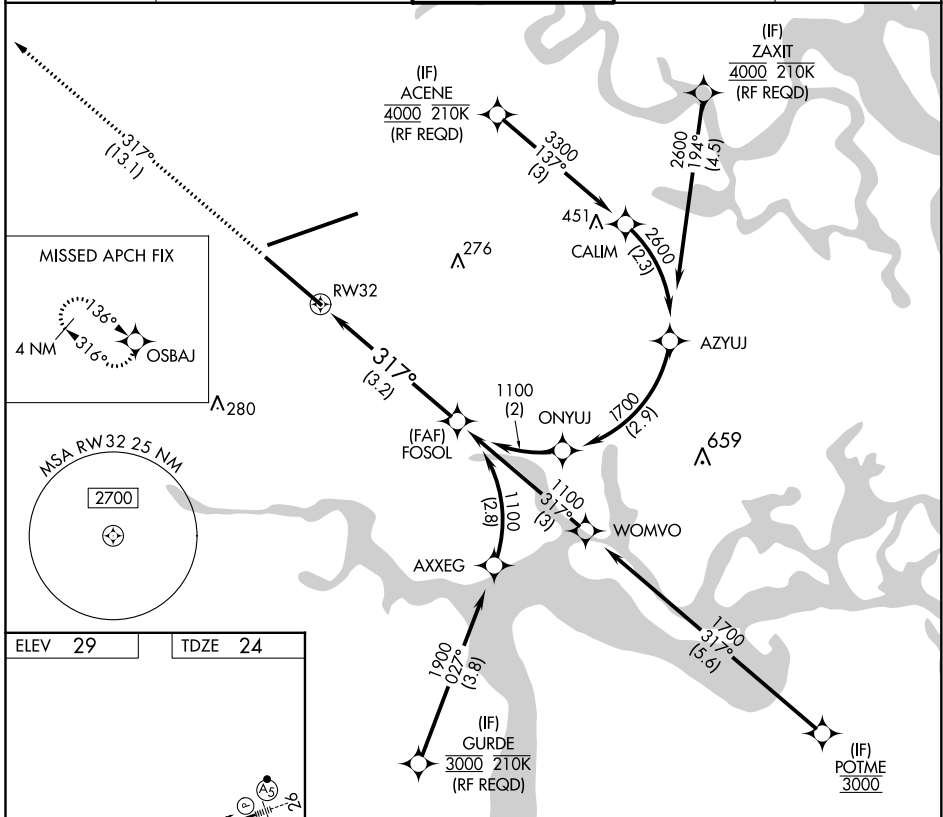


APP CRS	Rwy Idg	7701
317°	TDZE	24
	Apt Elev	29

RNAV (RNP) Y RWY 32

JACKSONVILLE INTL (JAX)

<p>▼ For uncompensated Baro-VNAV systems, procedure NA below -5°C (23°F) or above 54°C (130°F). GPS required.</p>		<p>MISSED APPROACH: Climb to 2000 on track 317° to OSBAJ and hold.</p>		
D-ATIS	JACKSONVILLE APP CON	JACKSONVILLE TOWER	GND CON	CLNC DEL
125.85	119.0 269.9	118.3 317.7	121.9 348.6	119.5 290.275



CATEGORY	A	B	C	D
RNP 0.11 DA		359-1 1/8	334 (400-1 1/8)	
RNP 0.30 DA		423-1 1/8	399 (400-1 1/8)	

AUTHORIZATION REQUIRED

SE-3, 15 JUL 2021 to 12 AUG 2021

SE-3, 15 JUL 2021 to 12 AUG 2021