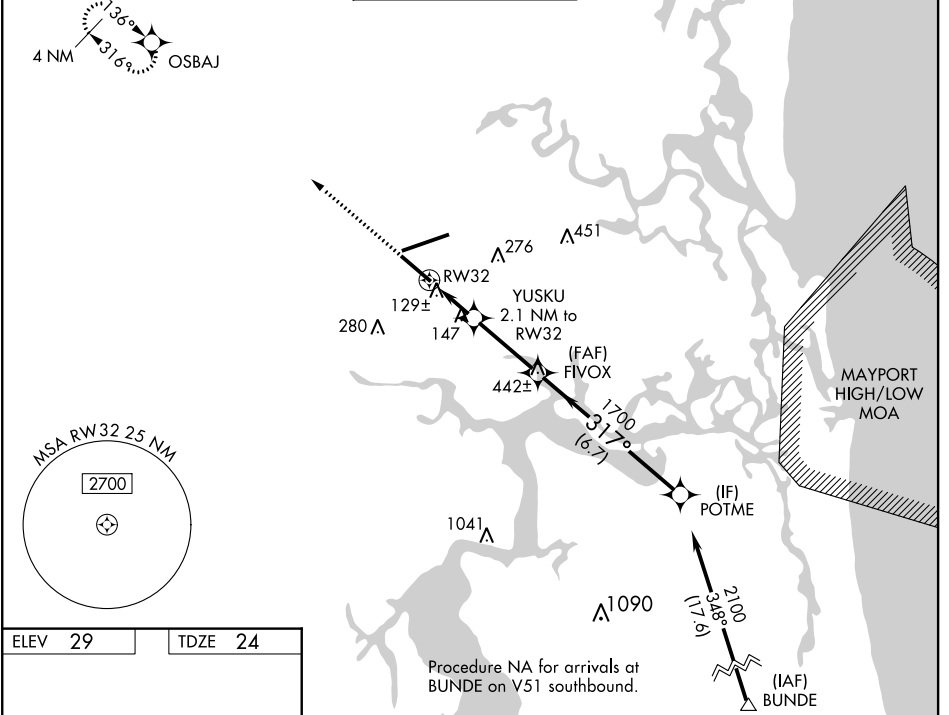


WAAS CH 40199 W32A	APP CRS 317°	Rwy Idg TDZE Apt Elev	7701 24 29
--	------------------------	-----------------------------	---------------------------------------

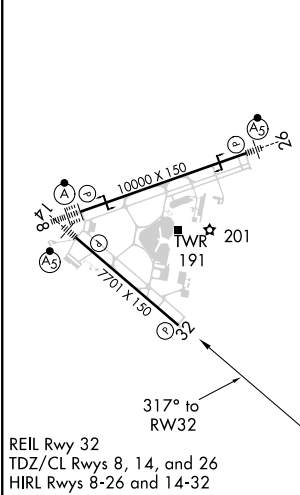
RNAV (GPS) Z RWY 32

JACKSONVILLE INTL (JAX)

<p>▼ For uncompensated Baro-VNAV systems, procedure NA below -5°C (23°F) or above 54°C (130°F). DME/DME RNP-0.3 NA. Helicopter visibility reduction below ¾ SM NA.</p>		<p>MISSED APPROACH: Climb to 2000 direct OSBAJ and hold.</p>		
D-ATIS 125.85	JACKSONVILLE APP CON 119.0 269.9	JACKSONVILLE TOWER 118.3 317.7	GND CON 121.9 348.6	CLNC DEL 119.5 290.275



ELEV 29	TDZE 24
---------	---------



2000 OSBAJ	VGSi and RNAV glidepath not coincident (VGSi Angle 3.00/TCH 67).			POTME
*LNAV only.	*1 NM to RW32	FIVOX 1700	317°	2100
	*740	1700		GP 3.00° TCH 50
	1 NM	-1.1 NM	3 NM	6.7 NM
CATEGORY	A	B	C	D
LPV DA	336-1 312 (400-1)			
LNAV/VNAV DA	387-1¼ 363 (400-1¼)			
LNAV MDA	400-1 376 (400-1)			
CIRCLING	520-1	491 (500-1)	520-1½ 491 (500-1½)	640-2 611 (700-2)

SE-3, 15 JUL 2021 to 12 AUG 2021

SE-3, 15 JUL 2021 to 12 AUG 2021