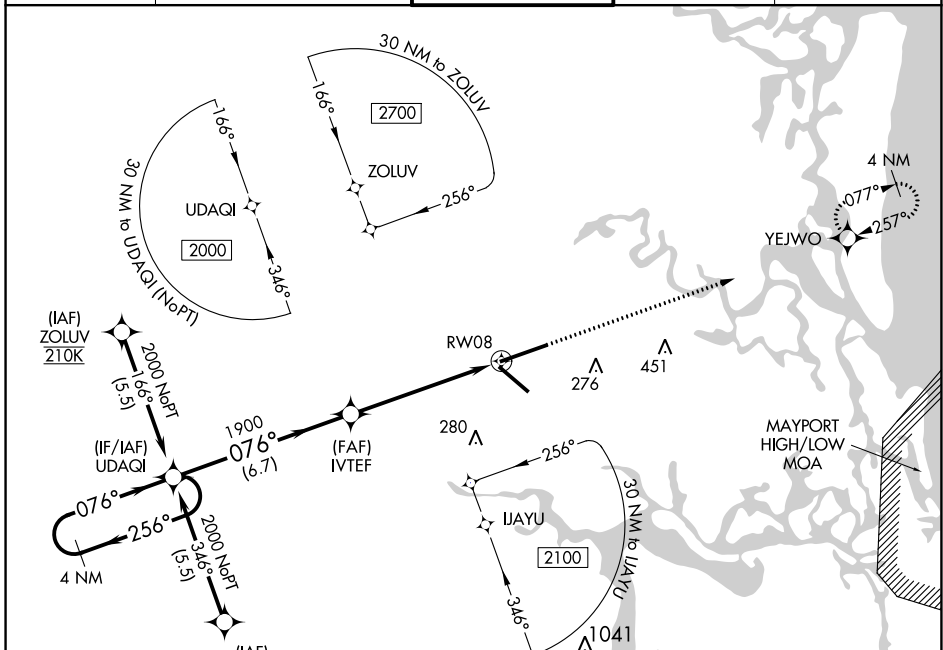


WAAS CH <b>50526</b> <b>W08A</b>	APP CRS <b>076°</b>	Rwy Idg <b>10000</b> TDZE <b>29</b> Apt Elev <b>29</b>
----------------------------------------	------------------------	--------------------------------------------------------------

# RNAV (GPS) Z RWY 8

JACKSONVILLE INTL (JAX)

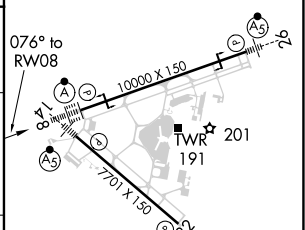
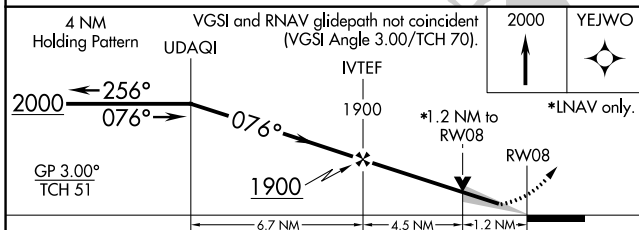
For uncompensated Baro-VNAV systems, procedure NA below -5°C (23°F) or above 54°C (130°F). DME/DME RNP-0.3 NA.		ALSF-2 	MISSED APPROACH: Climb to 2000 direct YEJWO and hold.	
D-ATIS <b>125.85</b>	JACKSONVILLE APP CON <b>119.0 269.9</b>	JACKSONVILLE TOWER <b>118.3 317.7</b>	GND CON <b>121.9 348.6</b>	CLNC DEL <b>119.5 290.275</b>



SE-3, 15 JUL 2021 to 12 AUG 2021

SE-3, 15 JUL 2021 to 12 AUG 2021

ELEV 29	TDZE 29
---------	---------



CATEGORY	A	B	C	D
LPV DA	229/18		200 (200-½)	
LNAV/VNAV DA	363/32		334 (400-⅙)	
LNAV MDA	480/24		451 (500-½)	480/45 451 (500-⅔)
CIRCLING	520-1 491 (500-1)		520-1½ 491 (500-1½)	640-2 611 (700-2)

