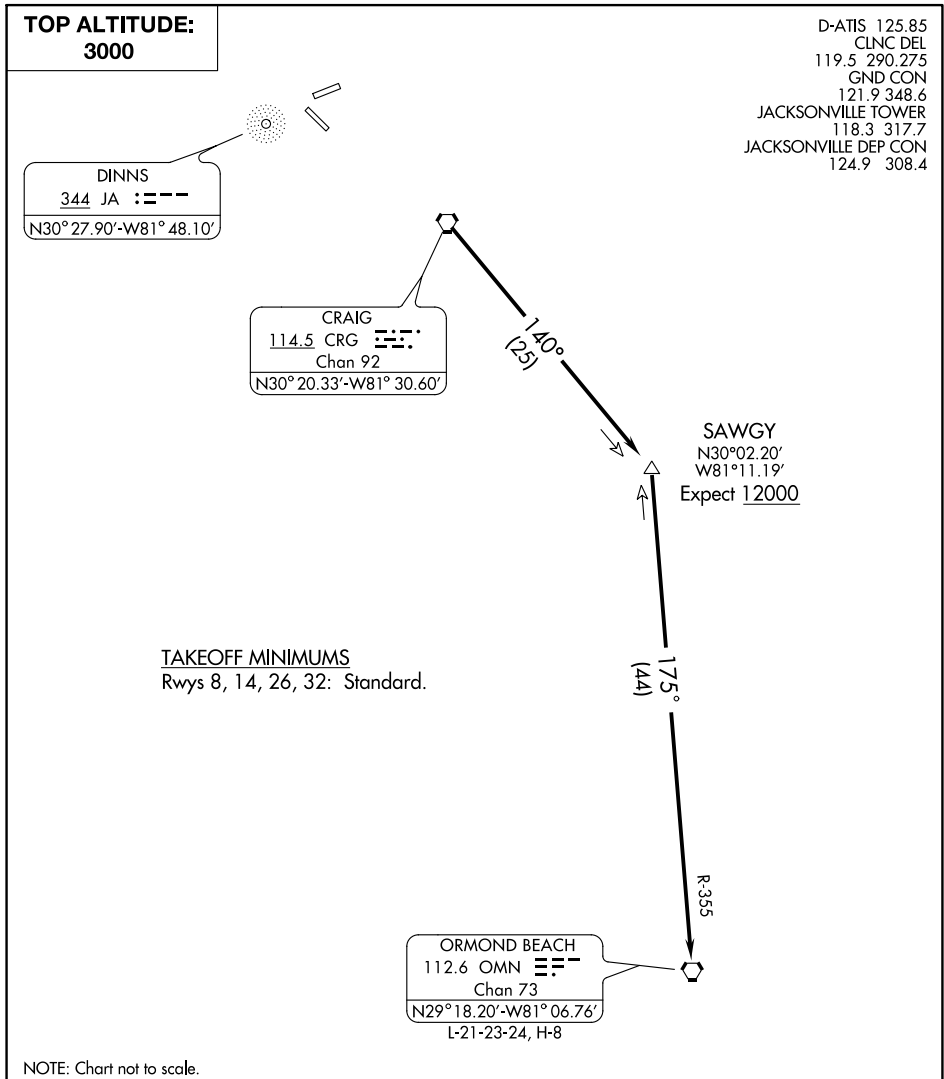


SAWGY TWO DEPARTURE



SE-3, 15 JUL 2021 to 12 AUG 2021

SE-3, 15 JUL 2021 to 12 AUG 2021



DEPARTURE ROUTE DESCRIPTION

TAKE-OFF ALL RUNWAYS: Climb on assigned heading for radar vectors to join CRG R-140 to SAWGY INT, then via OMN R-355 to OMN VORTAC, maintain 3000, expect clearance to requested altitude/flight level 10 minutes after departure.

SAWGY TWO DEPARTURE