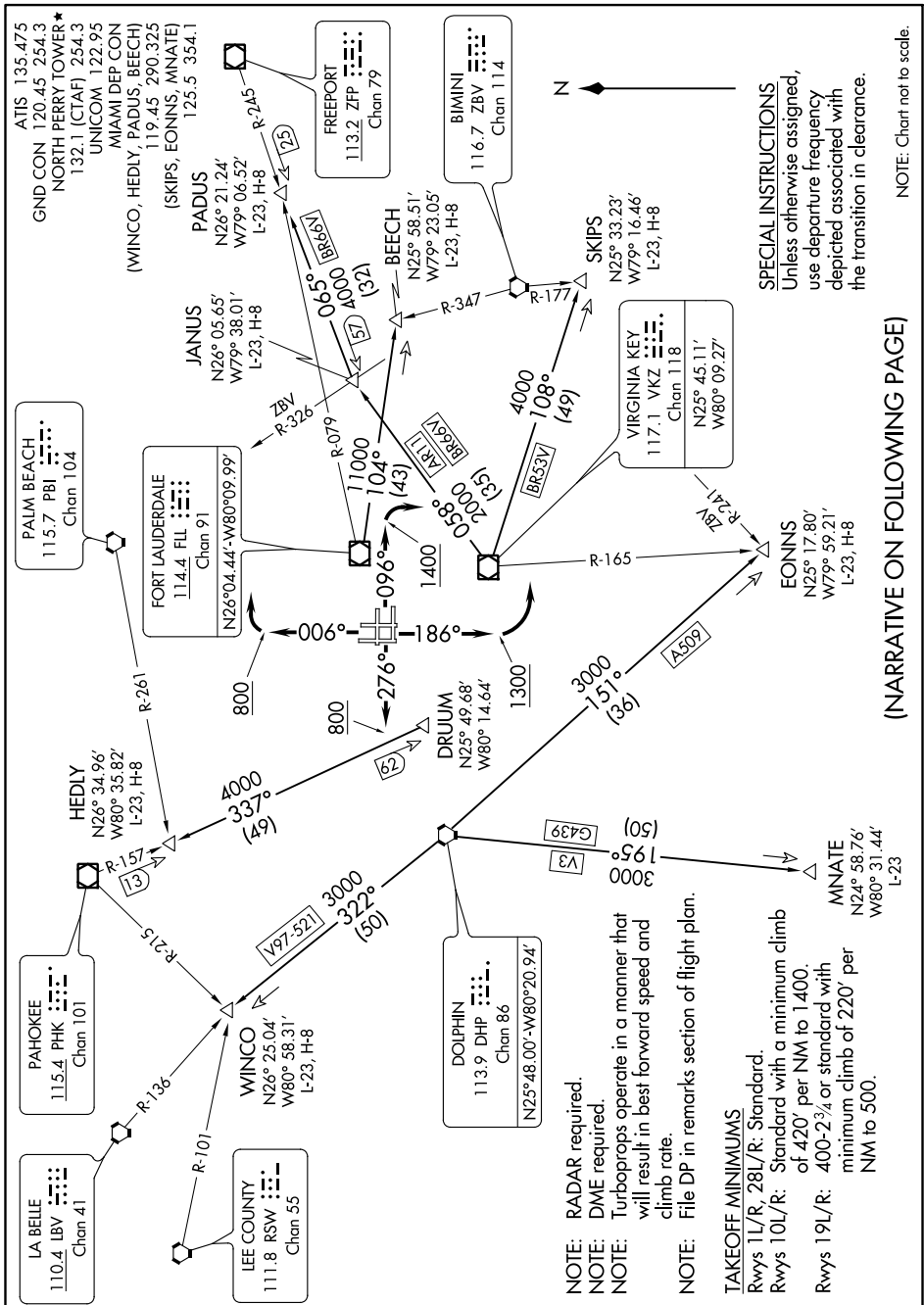


MIAMI SEVEN DEPARTURE

SE-3, 15 JUL 2021 to 12 AUG 2021



(NARRATIVE ON FOLLOWING PAGE)

SE-3, 15 JUL 2021 to 12 AUG 2021

MIAMI SEVEN DEPARTURE

NOTE: Chart not to scale.

- NOTE: RADAR required.
- NOTE: DME required.
- NOTE: Turboprops operate in a manner that will result in best forward speed and climb rate.
- NOTE: File DP in remarks section of flight plan.
- TAKEOFF MINIMUMS**
Rwys 11/R, 28L/R: Standard.
Rwys 10L/R: Standard with a minimum climb of 420' per NM to 1400.
Rwys 19L/R: 400-2³/₄ or standard with minimum climb of 220' per NM to 500.

SPECIAL INSTRUCTIONS
Unless otherwise assigned, use departure frequency depicted associated with the transition in clearance.