

APP CRS	Rwy Idg	3180
269°	TDZE	9
	Apt Elev	9

RNAV (GPS) RWY 28R

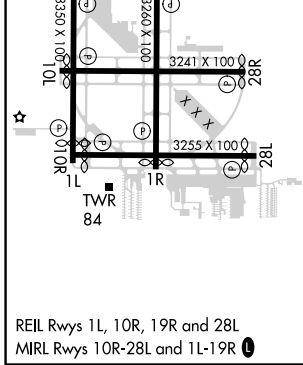
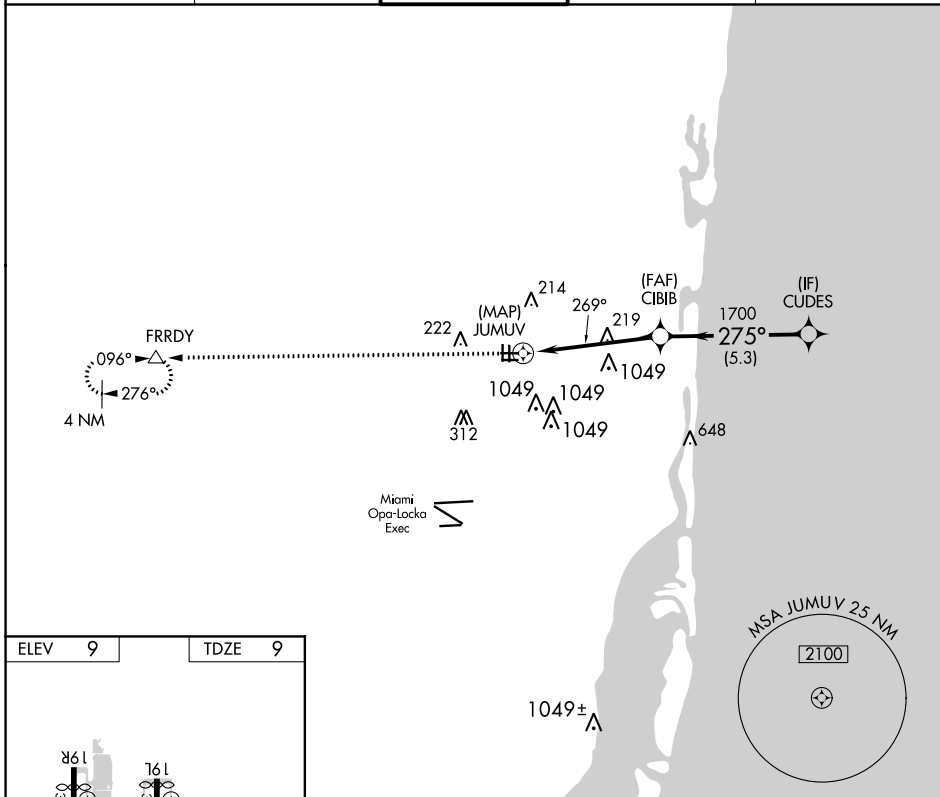
NORTH PERRY (HWO)

RNP APCH. RADAR required for procedure entry.

▼ Rwy 28R helicopter visibility reduction below $\frac{3}{4}$ SM NA. Straight-in minimums NA at night. Circling Rwy 1R, 10L, 19L, 28R NA at night.

MISSED APPROACH: Climb to 2000 direct FRRDY and hold.

ATIS 135.475	MIAMI APP CON 128.6 306.975	NORTH PERRY TOWER* 132.1 (CTAF) 0 254.3	GND CON 120.45 254.3	UNICOM 122.95
------------------------	---------------------------------------	--	--------------------------------	-------------------------



2000	FRRDY	VGSI and descent angles not coincident (VGSI Angle 3.50/TCH 39).	CUDES	
			2000	
	JUMUV	CIBIB	1700	
			275°	
			269°	
			≤ 3.00° TCH 43	
			0.3 4.9 NM 5.3 NM	
CATEGORY	A	B	C	D
LNAV MDA	520-1	511 (600-1)	520-1 $\frac{3}{8}$ 511 (600-1 $\frac{3}{8}$)	NA
CIRCLING	560-1	551 (600-1)	560-1 $\frac{1}{2}$ 551 (600-1 $\frac{1}{2}$)	NA

SE-3, 15 JUL 2021 to 12 AUG 2021

SE-3, 15 JUL 2021 to 12 AUG 2021