

WAAS CH <b>99302</b> W01A	APP CRS <b>010°</b>	Rwy Idg TDZE <b>1255</b> Apt Elev <b>1255</b>
---------------------------------	------------------------	---

# RNAV (GPS) RWY 1

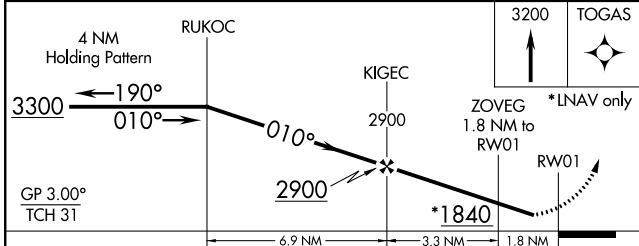
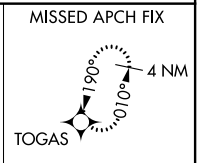
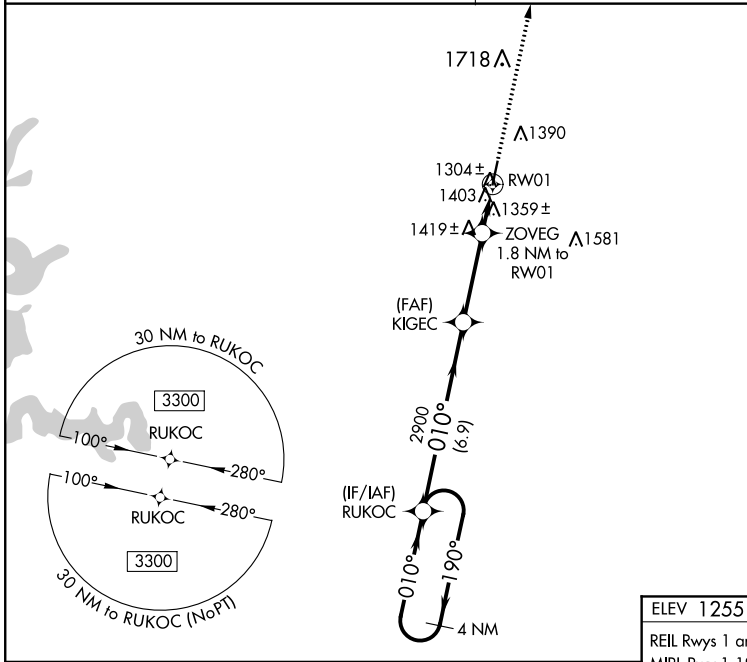
NEOSHO HUGH ROBINSON (E/O/S)

**⚠** Baro-VNAV NA when using Joplin altimeter setting. For uncompensated Baro-VNAV systems, LNAV/VNAV NA below -17°C (2°F) or above 54°C (130°F). DME/DME RNP-0.3 NA.  
**⚠** Visibility reduction by helicopters NA. When local altimeter setting not received, use Joplin altimeter setting and increase all DA 87 feet and all MDA 100 feet; increase LPV all Cats visibility 1/8 mile, LNAV/VNAV all Cats visibility 3/8 mile, and LNAV Cat C visibility 1/4 mile.  
 When VGSI inop, Straight-in/Circling to Rwy 1 NA at night.

**MISSED APPROACH:**  
 Climb to 3200 direct TOGAS and hold.

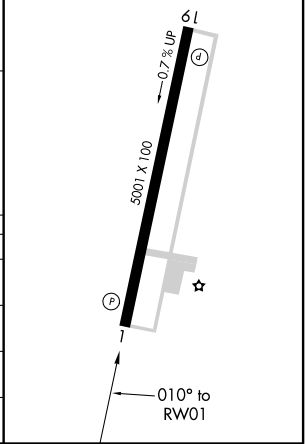
KANSAS CITY CENTER  
**128.6 282.325**

AUNICOM  
**122.8 (CTAF)**



ELEV 1255 | TDZE 1255

REIL Rwys 1 and 19  
 MIRL Rwy 1-19



CATEGORY	A	B	C	D
LPV DA	1505-1 250 (300-1)			NA
LNAV/VNAV DA	1658-1 3/8 403 (500-1 3/8)			NA
LNAV MDA	1680-1 425 (500-1)	1680-1 1/4 425 (500-1 1/4)		NA
CIRCLING	1720-1 465 (500-1)	1740-1 1/2 485 (500-1 1/2)		NA

NC-3, 15 JUL 2021 to 12 AUG 2021

NC-3, 15 JUL 2021 to 12 AUG 2021