

|                       |                        |                             |  |
|-----------------------|------------------------|-----------------------------|--|
| NDB CNH<br><b>233</b> | APP CRS<br><b>048°</b> | Rwy Idg<br>TDZE<br>Apt Elev | <b>N/A</b><br><b>N/A</b><br><b>544</b> |
|-----------------------|------------------------|-----------------------------|--|

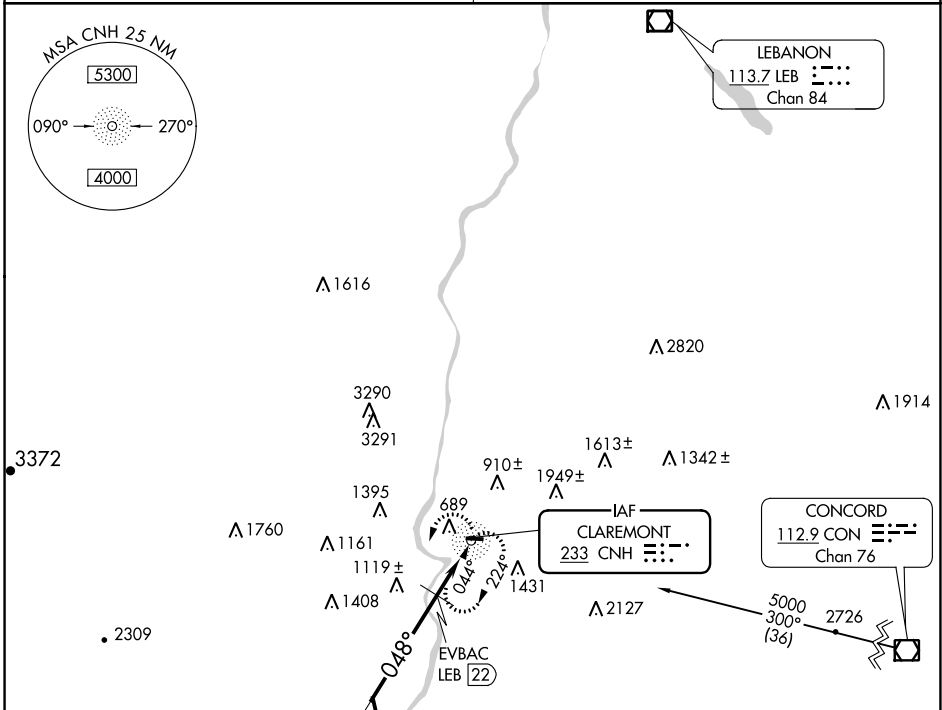
# NDB-A

CLAREMONT MUNI (CNH)

**Procedure NA at night. Obtain local altimeter setting on CTAF; when not received, use Springfield altimeter setting and increase all MDA 20 feet.**

**MISSED APPROACH:** Climbing left turn to 3500 via CNH NDB 228° bearing outbound then right turn direct CNH NDB and hold.

|  |                                      |
|--|--------------------------------------|
| <b>BOSTON CENTER</b><br><b>134.7 381.4</b> | <b>UNICOM</b><br><b>122.7 (CTAF)</b> |
|--|--------------------------------------|



Remain within 10 NM

† CNH NDB

3500

CNH 228°

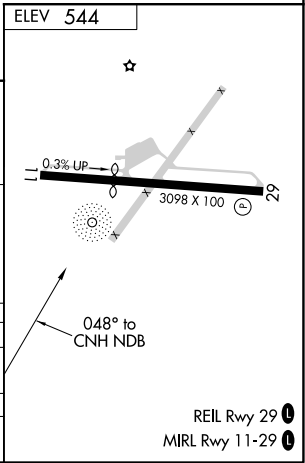
CNH

† Maintain 3500 or above until established outbound for procedure turn.

\* 2060 when using Springfield altimeter setting.

\* 2040

2.3 NM



| CATEGORY           | A                         | B                         | C | D  |
|--------------------|---------------------------|---------------------------|---|----|
| CIRCLING           | 2040-1¼<br>1496 (1500-1¼) | 2040-1½<br>1496 (1500-1½) |   | NA |
| EVBAC DME MINIMUMS |                           |                           |   |    |
| CIRCLING           | 1520-1¼<br>976 (1000-1¼)  | 1600-1½<br>1056 (1100-1½) |   | NA |

NE-1, 15 JUL 2021 to 12 AUG 2021

NE-1, 15 JUL 2021 to 12 AUG 2021