

**(WAALK.WAALK1) 21168**  
**WAALK ONE ARRIVAL**

AL-5623 (FAA)

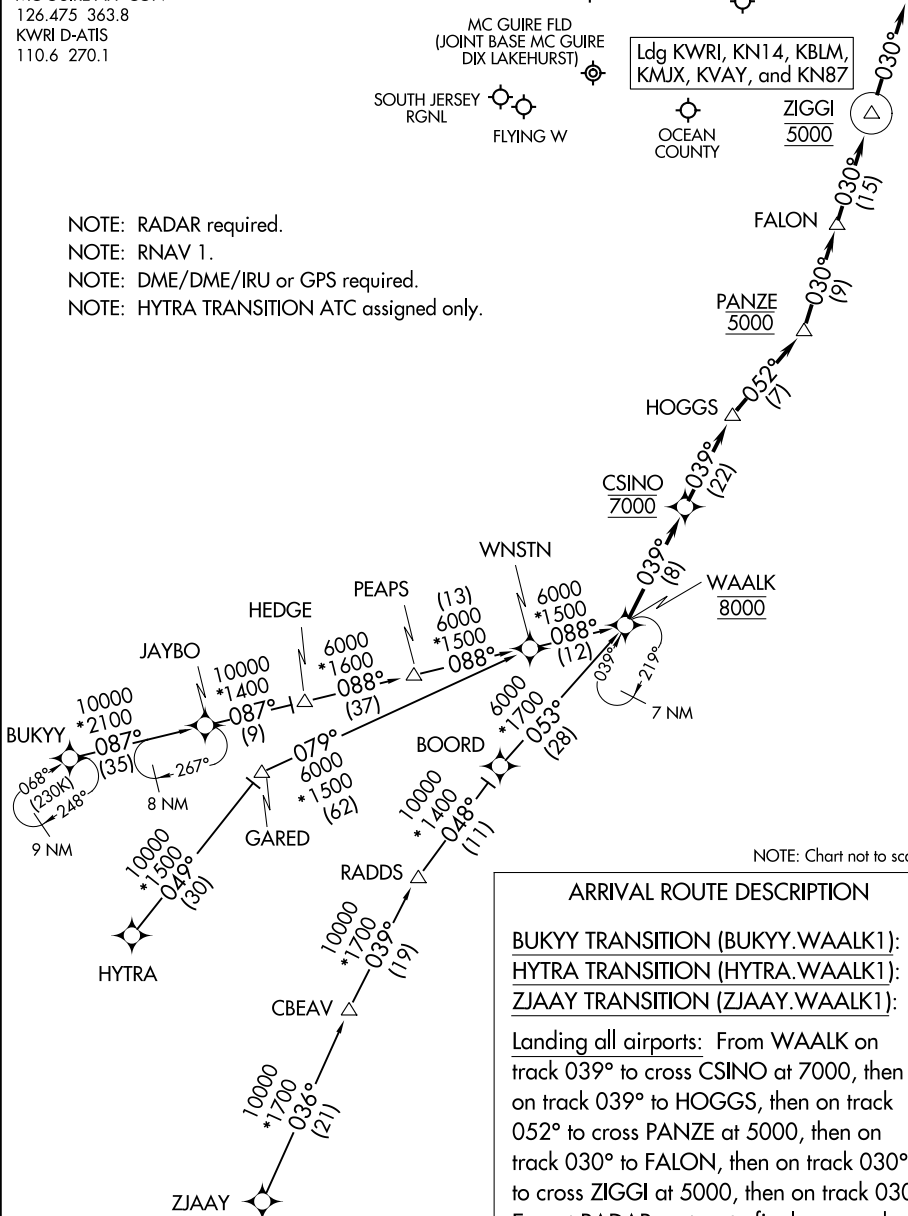
TOMS RIVER, NEW JERSEY

ATLANTIC CITY APP CON  
 124.6 327.125  
 MC GUIRE APP CON  
 126.475 363.8  
 KWRI D-ATIS  
 110.6 270.1

TRENTON-ROBBINSVILLE  
 MC GUIRE FLD  
 (JOINT BASE MC GUIRE  
 DIX LAKEHURST)  
 SOUTH JERSEY  
 RGNL  
 FLYING W

MONMOUTH  
 EXEC  
 OCEAN  
 COUNTY  
 ZIGGI  
 5000  
 Ldg KWRI, KN14, KBLM,  
 KMJX, KVAY, and KN87

- NOTE: RADAR required.
- NOTE: RNAV 1.
- NOTE: DME/DME/IRU or GPS required.
- NOTE: HYTRA TRANSITION ATC assigned only.



NOTE: Chart not to scale.

**ARRIVAL ROUTE DESCRIPTION**

- BUKYY TRANSITION (BUKYY.WAALK1):**
- HYTRA TRANSITION (HYTRA.WAALK1):**
- ZJAAY TRANSITION (ZJAAY.WAALK1):**

**Landing all airports:** From WAALK on track 039° to cross CSINO at 7000, then on track 039° to HOGGS, then on track 052° to cross PANZE at 5000, then on track 030° to FALON, then on track 030° to cross ZIGGI at 5000, then on track 030°. Expect RADAR vectors to final approach course.

**WAALK ONE ARRIVAL**  
 (WAALK.WAALK1) 05NOV20

TOMS RIVER, NEW JERSEY

NE-2, 15 JUL 2021 to 12 AUG 2021

NE-2, 15 JUL 2021 to 12 AUG 2021