

LOC I-MMV <b>110.9</b>	APP CRS <b>218°</b>	Rwy Idg TDZE <b>161</b> Apt Elev <b>163</b>
---------------------------	------------------------	---

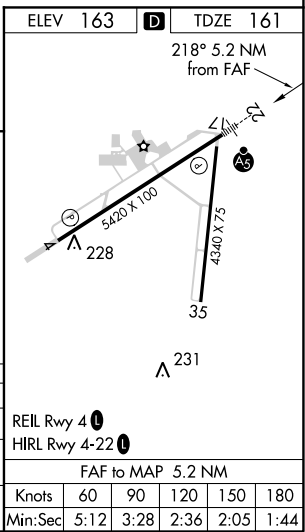
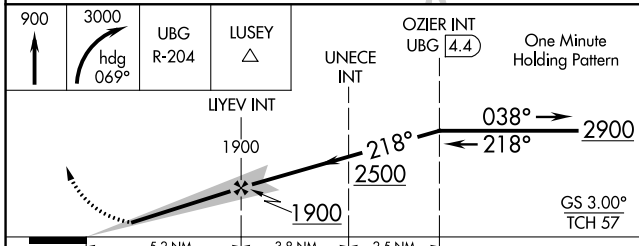
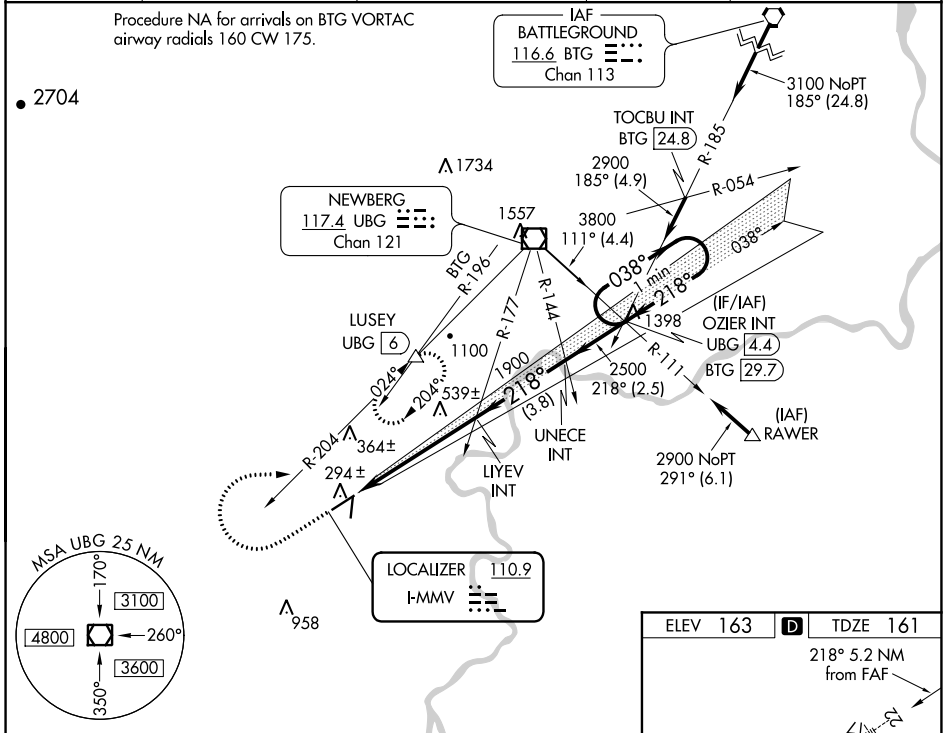
# ILS or LOC RWY 22

MC MINNVILLE MUNI (MMV)

**⚠** DME Required. When local altimeter setting not received, use Aurora State altimeter setting: increase all DA to 403 feet; increase all MDA 60 feet and S-LOC 22 all Cats and Circling Cat C visibility 1/4 SM.

**MALS**  
MISSED APPROACH: Climb to 900 then climbing right turn to 3000 via heading 069° and UBG VOR/DME R-204 to LUSEY/UBG VOR/DME 6 DME and hold, continue climb-in-hold to 3000. When authorized by ATC, climb-in-hold to 6000.

ASOS <b>135.675</b>	PORTLAND APP CON <b>126.0 284.6</b> (NORTH)	SEATTLE CENTER <b>125.8 291.7</b> (SOUTH)	CLNC DEL <b>118.35</b>	UNICOM <b>123.0</b> (CTAF) <b>0</b>
------------------------	--	--	---------------------------	--



CATEGORY	A	B	C	D
S-ILS 22	361-1/2		200 (200-1/2)	
S-LOC 22	600-1/2	439 (500-1/2)	600-3/4 439 (500-3/4)	600-1 439 (500-1)
CIRCLING	660-1 497 (500-1)	840-1 677 (700-1)	920-2 1/4 757 (800-2 1/4)	1320-3 1157 (1200-3)

NW-1, 15 JUL 2021 to 12 AUG 2021

NW-1, 15 JUL 2021 to 12 AUG 2021