

| | | | |
|--|------------------------|-----------------------------|---|
| WAAS CH 50309 W22A | APP CRS 218° | Rwy Idg TDZE Apt Elev | 5420 161 163 |
|--|------------------------|-----------------------------|---|

RNAV (GPS) RWY 22

MC MINNVILLE MUNI (MMV)

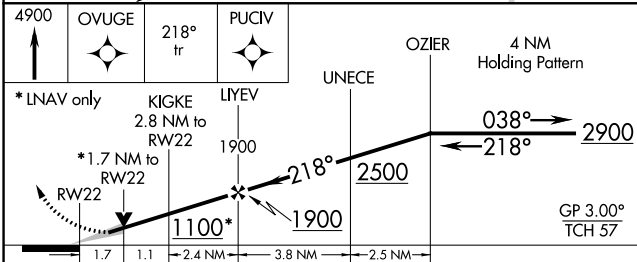
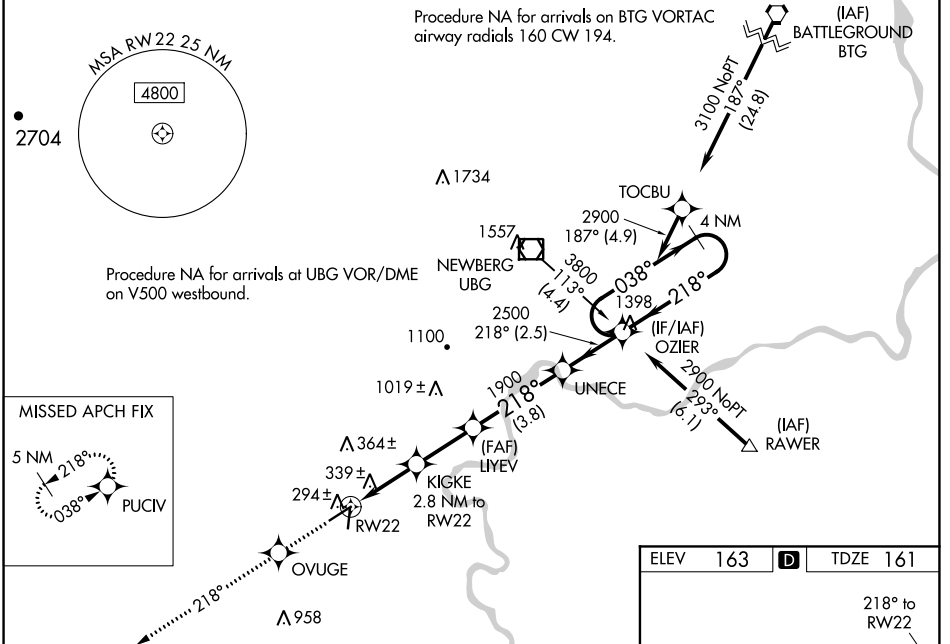
RNP APCH.

▼ Baro-VNAV NA when using Aurora State altimeter setting. For uncompensated Baro-VNAV systems, LNAV/VNAV NA below -15°C or above 48°C. When local altimeter setting not received, use Aurora State altimeter setting; increase LPV DA to 534 feet, LNAV/VNAV DA to 703 feet; increase all MDAs 60 feet and visibility LNAV Cats C and D ½ SM. For inop ALS, increase LPV all Cats visibility to ¾ SM, LNAV/VNAV all Cats to 1 ½ SM, LNAV Cat A/B to 1 SM and Cat C/D to 1 ½ SM. For inop ALS when using Aurora State altimeter setting, increase LNAV/VNAV all Cats visibility to 1 ½ SM, LNAV Cat A/B to 1 SM and Cat C/D to 1 ½ SM. VDP NA when using Aurora State altimeter setting.

MALSR

MISSED APPROACH: Climb to 4900 direct OVUGE then on 218° track to PUCIV and hold, continue climb-in-hold to 4900.

| | | | | |
|------------------------|--|--|---------------------------|--|
| ASOS 135.675 | PORTLAND APP CON 126.0 284.6 (NORTH) | SEATTLE CENTER 125.8 291.7 (SOUTH) | CLNC DEL 118.35 | UNICOM 123.0 (CTAF) 1 |
|------------------------|--|--|---------------------------|--|



| CATEGORY | A | B | C | D |
|--------------|---------------------|---|---------------------|---|
| LPV DA | 474-¾ 313 (400-¾) | | | |
| LNAV/VNAV DA | 643-1¼ 482 (500-1¼) | | | |
| LNAV MDA | 740-¾ 579 (600-¾) | | 740-1¼ 579 (600-1¼) | |

ELEV 163 TDZE 161

REIL Rwy 4

HIRL Rwy 4-22

NW-1, 15 JUL 2021 to 12 AUG 2021

NW-1, 15 JUL 2021 to 12 AUG 2021