

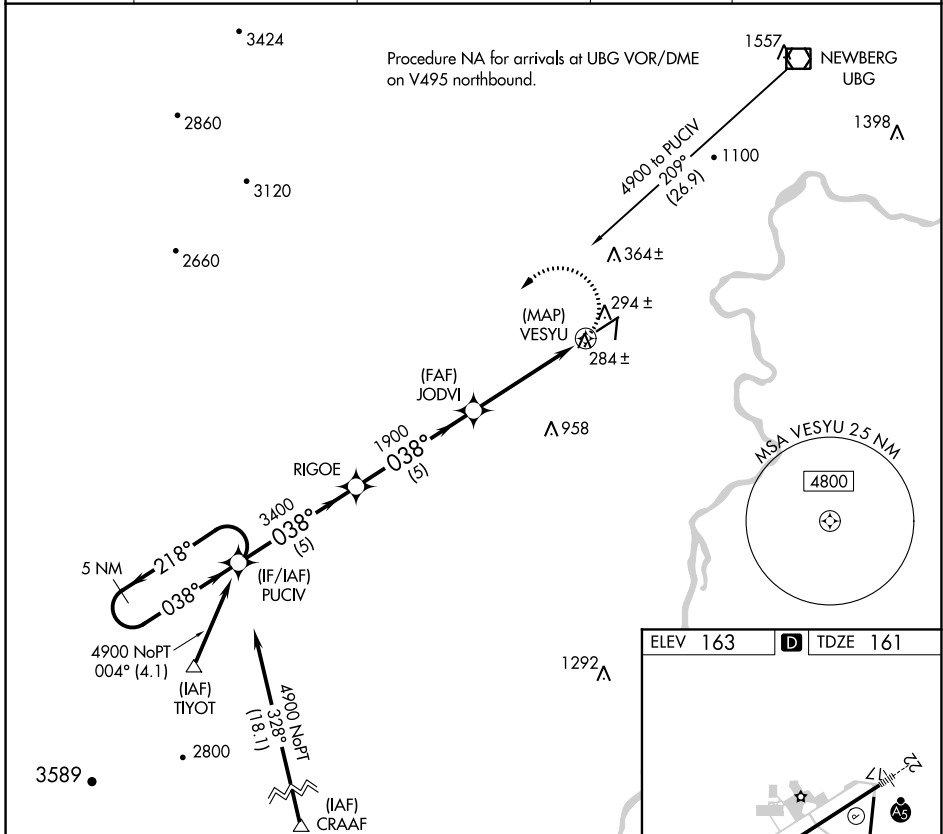
APP CRS	Rwy Idg	<b>5320</b>
<b>038°</b>	TDZE	<b>161</b>
	Apt Elev	<b>163</b>

# RNAV (GPS) RWY 4

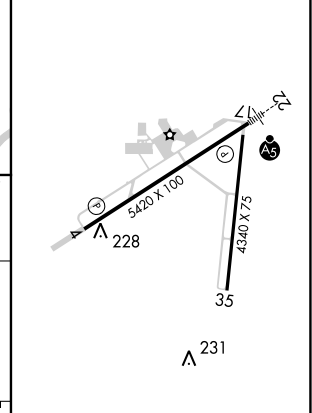
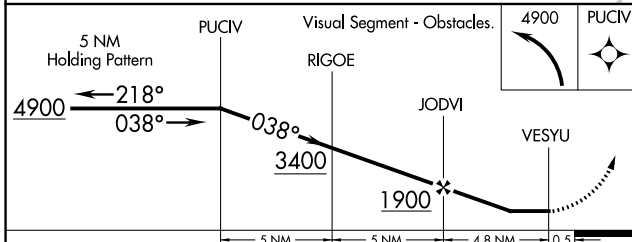
MC MINNVILLE MUNI (MMV)

RNP APCH.		MISSED APPROACH: Climbing left turn to 4900 direct PUCIV and hold, continue climb-in-hold to 4900.	
<p><b>▼</b> When local altimeter setting not received, use Aurora State altimeter setting and increase all MDA 60 feet and visibility Cts C/D to 1<math>\frac{1}{2}</math>.  <b>▲</b> Rwy 4 helicopter visibility reduction below <math>\frac{3}{4}</math> SM NA.</p>			

ASOS <b>135.675</b>	PORTLAND APP CON <b>126.0 284.6</b> (NORTH)	SEATTLE CENTER <b>125.8 291.7</b> (SOUTH)	CLNC DEL <b>118.35</b>	UNICOM <b>123.0</b> (CTAF) <b>0</b>
------------------------	--	--	---------------------------	--



ELEV 163	<b>D</b> TDZE 161
----------	-------------------



CATEGORY	A	B	C	D
LNAV MDA	600-1	439 (500-1)	600-1 $\frac{1}{4}$	439 (500-1 $\frac{1}{4}$ )

REIL Rwy 4 <b>0</b>
HIRL Rwy 4-22 <b>0</b>

NW-1, 15 JUL 2021 to 12 AUG 2021

NW-1, 15 JUL 2021 to 12 AUG 2021